

CITY OF NOVATO  
DEPARTMENT OF PUBLIC WORKS

October 3, 2024

Grant Avenue Bridge Rehabilitation  
City Project No.: 09-003  
Federal Project No.: BHLS 5361(023)

To: Gosia Woodfin  
Project Manager  
Department of Public Works

Subject: Monthly Newsletter

Monthly Newsletter #			06
Newsletter Month Ending			September 30, 2024
% Time Elapsed	62%	% Complete	72%
Est. Date of Completion			February 06, 2025
Date Contract Expires			February 06, 2025

**THIS PAST MONTH THE FOLLOWING WORK WAS DONE:**

- Poured Concrete Retaining Wall
- Finished all the Concrete Bridge Railing
- Finished all South Sidewalk
- Obliterated existing AC Pavement.

**WORK NEXT MONTH WILL PROBABLY CONSIST OF:**

- Finish Tree and Shrub Planting
- Install Joint Seal
- Grind and Groove Bridge
- Finish Storm Drain
- Place HMA Pavement (Stage 4)
- Traffic Switch to Stage 5

**OUTSTANDING ISSUES WITH CONTRACTOR AND PROGRESS OF CONSTRUCTION:**

- The Contractor is ahead of schedule.



Sunny Jhutti, P.E., S.E.  
Resident Engineer

cc: File: 28.06.01, GW, EE



**Figure 1 – Retaining Wall Stem Reinforcement complete.**



**Figure 2 – Begin forming Type 732 Bridge Barrier**



**Figure 3 – Bridge Barrier Rebar almost complete.**



**Figure 4 – Forming West Driveway.**



**Figure 5 – Forming Curb, Gutter & Sidewalk by Cork Oak.**



**Figure 6 – Poured West Driveway.**



**Figure 7 – Pour curb, gutter & sidewalk near Cork Oak.**



**Figure 8 – Stripped Retaining wall forms.**



**Figure 9 – Compacting base for the Sidewalk.**



**Figure 10 – Pouring Southeast Type B Ramp.**



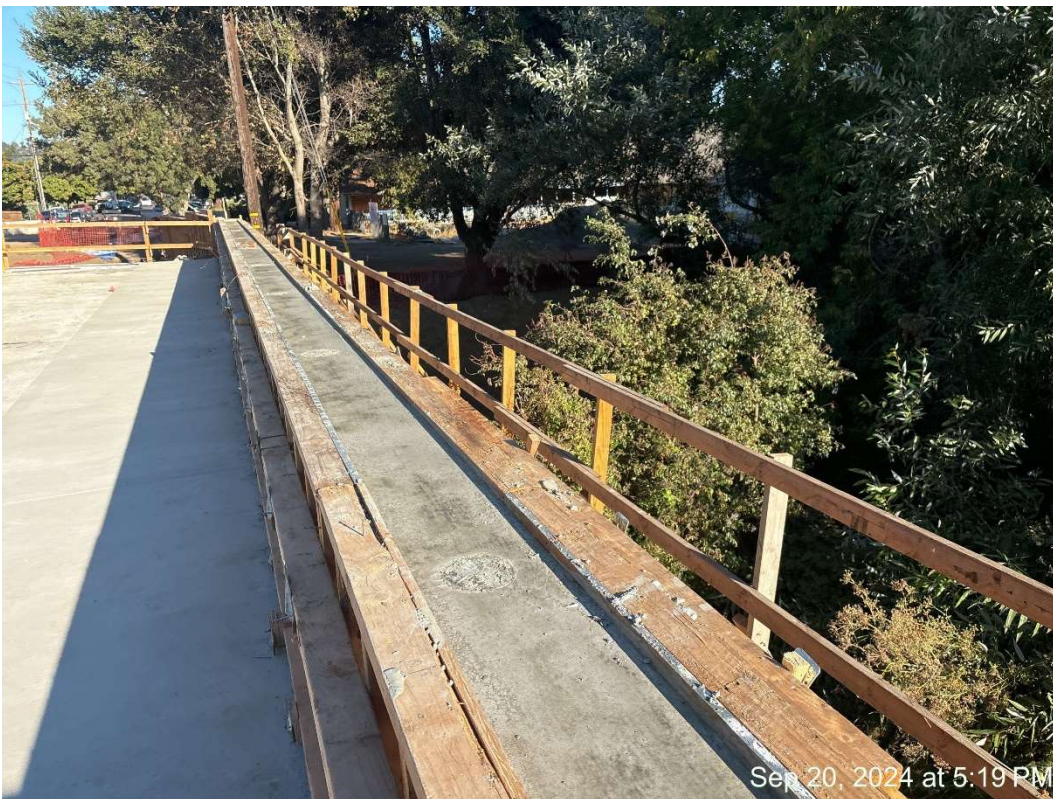
**Figure 11 – Completed Type B Ramp at Southeast.**



**Figure 12 – Ready for Type 732 SW Barrier Pour.**



**Figure 13 – Pouring Bridge Barrier.**



**Figure 14 – Bridge Barrier Poured.**





**Figure 15 – Bridge Barrier Poured.**



Oct 1, 2024 at 2:13 PM

**Figure 16 – Sidewalk section by Retaining Wall Poured.**



**Figure 17 – Pouring Southwest Ramp (Type C)**



**Figure 18 – Barrier complete.**



**Figure 19 – Obliterating existing Pavement.**



**Figure 20 – Obliterating existing Pavement.**