

CITY OF NOVATO
DEPARTMENT OF PUBLIC WORKS

August 30, 2024

Grant Avenue Bridge Rehabilitation
City Project No.: 09-003
Federal Project No.: BHLS 5361(023)

To: Gosia Woodfin
Project Manager
Department of Public Works

Subject: Monthly Newsletter

Monthly Newsletter #			05
Newsletter Month Ending			August 30, 2024
% Time Elapsed	50%	% Complete	60%
Est. Date of Completion			February 06, 2025
Date Contract Expires			February 06, 2025

THIS PAST MONTH THE FOLLOWING WORK WAS DONE:

- Finished Rock Slope Protection in Creek
- Creek Restoration
- Pour Bridge Deck
- Pour Bridge Sidewalk
- Pour Bridge Approach Slabs
- Pour Retaining Wall Footing

WORK NEXT MONTH WILL PROBABLY CONSIST OF:

- Form, Rebar and Pour Retaining Wall
- Pour Bridge Railings
- Place Joint Seal
- Pour South Sidewalk
- Pour Polyester Concrete (partial)

OUTSTANDING ISSUES WITH CONTRACTOR AND PROGRESS OF CONSTRUCTION:

- The Contractor is ahead of schedule.



Sunny Jhutti, P.E., S.E.
Resident Engineer

cc: File: 28.05.01, GW, EE

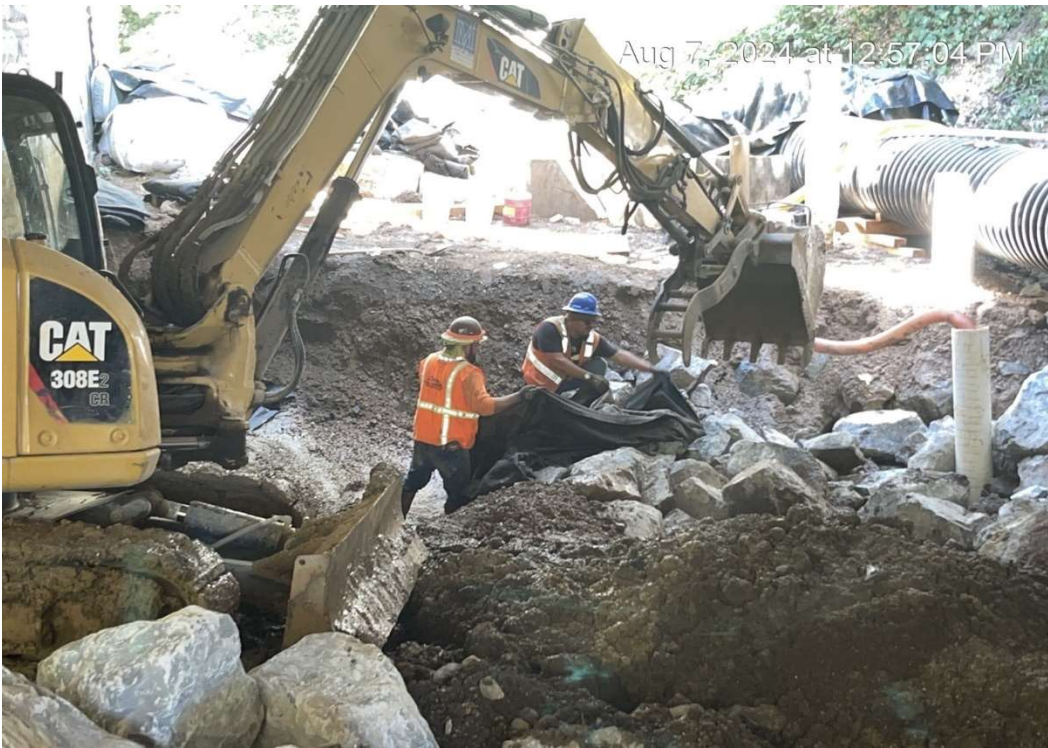


Figure 1 – Contractor placing ¼ Ton RSP on Fabric.



Figure 2 – Contractor excavating and dewatering to place ¼ Ton RSP.



Figure 3 – Contractor measuring distance to weepholes.



Figure 4 – Placing ¼ Ton RSP.



Figure 5 – Placing ¼ Ton RSP under suspended conveyance pipe.



Figure 6 – RSP placed in maintenance easement.



Figure 7 – RSP placed in maintenance easement.



Figure 8 – Cofferdam removed and Creek Restoration.



Figure 9 – Creek Restoration.



Figure 10 – Creek Restoration complete.



Figure 11 – Deck Reinforcement Placed.



Figure 12 – Pouring Deck.



Figure 13 – Curing Deck – Water Cure.

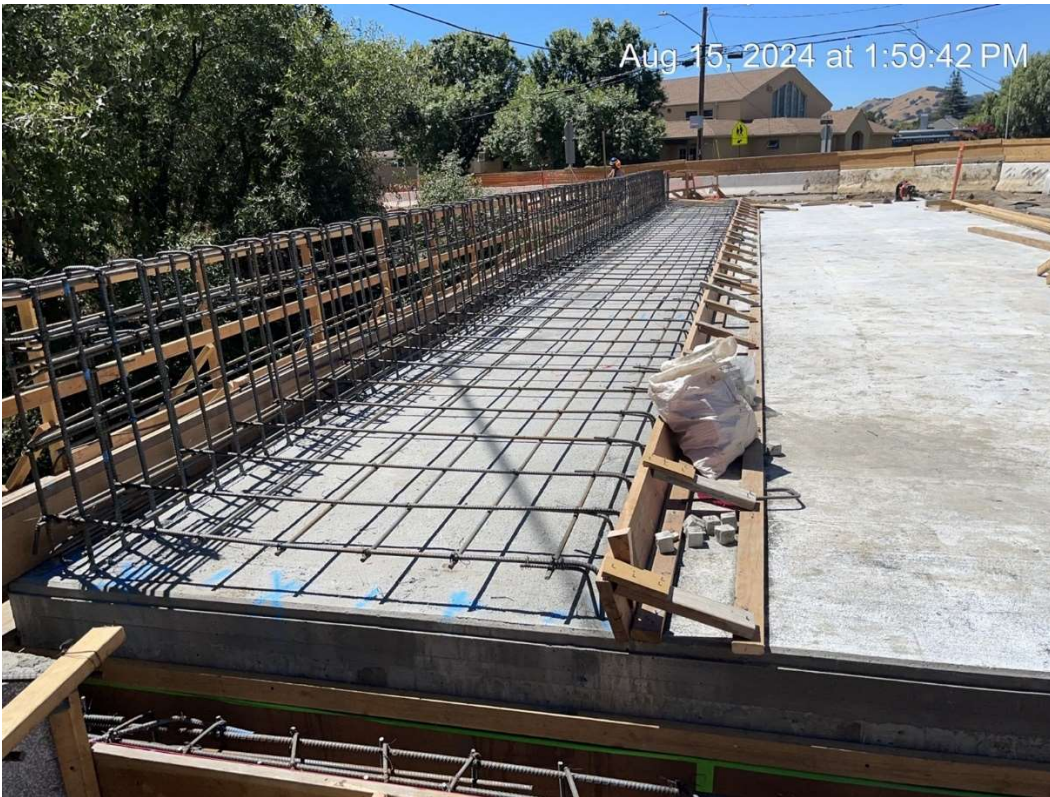


Figure 14 – Sidewalk and Railing (Type 732 SW) Reinforcement complete.

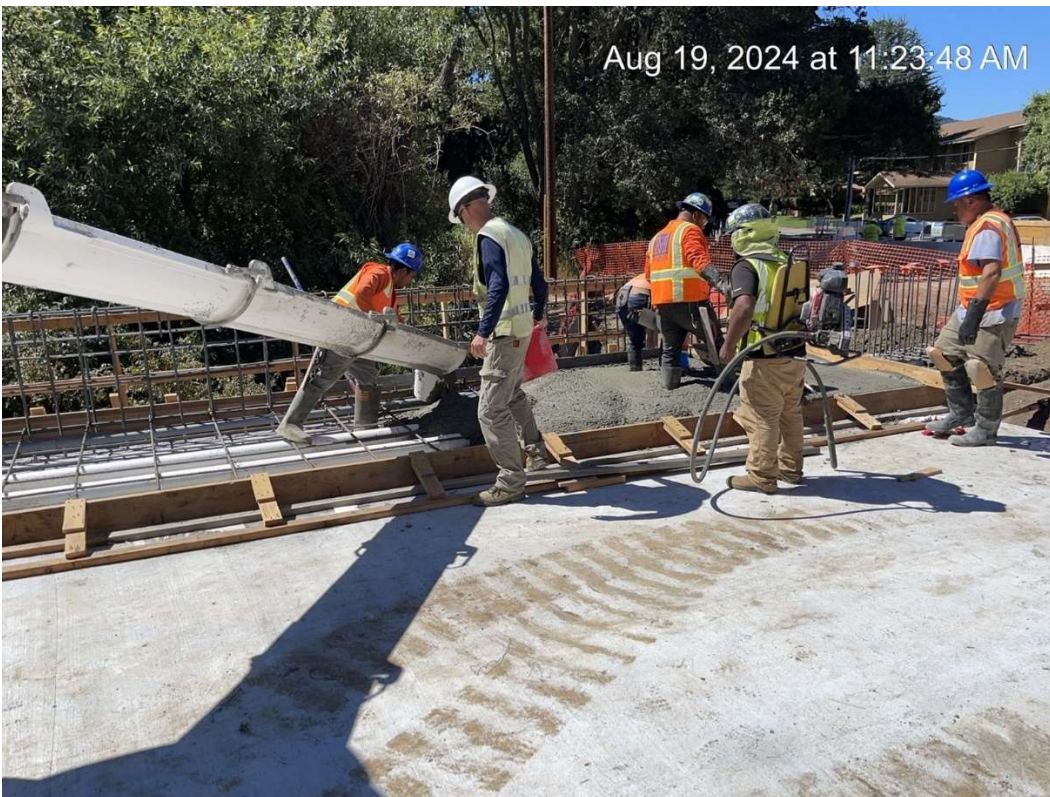


Figure 15 – Pour Sidewalk.

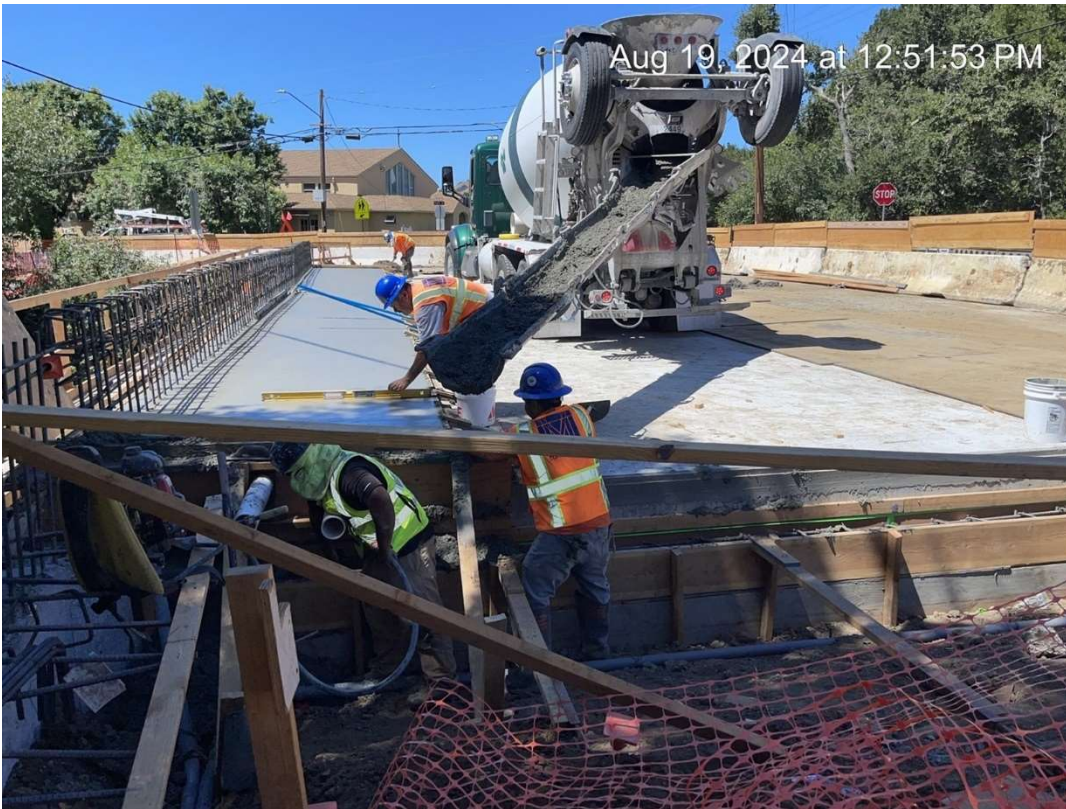


Figure 16 – Pour Sidewalk.



Figure 17 – Sidewalk complete.



Figure 18 – Bar Reinforcement for Approach Slabs.



Figure 19 – Completed Approach Slabs.



Figure 20 – Retaining Wall Reinforcement complete in footing.



Figure 21 – Pour Retaining Wall Footing.