

CITY OF NOVATO
DEPARTMENT OF PUBLIC WORKS

June 30, 2024

Grant Avenue Bridge Rehabilitation
City Project No.: 09-003
Federal Project No.: BHLS 5361(023)

To: Gosia Woodfin
Project Manager
Department of Public Works

Subject: Monthly Newsletter

Monthly Newsletter #			03
Newsletter Month Ending			June 30, 2024
% Time Elapsed	27%	% Complete	33%
Est. Date of Completion			February 06, 2025
Date Contract Expires			February 06, 2025

THIS PAST MONTH THE FOLLOWING WORK WAS DONE:

- Finished Drilling of Bridge CIDH Piles
- Gamma-Gamma Logging (CT-233)
- Repair Minor Pile Defect at Abutment 1 Pile #2.
- Grouting Piles
- Form, Rebar, and Pour Abutments and Wingwalls

WORK NEXT MONTH WILL PROBABLY CONSIST OF:

- Bridge Demolition (Partial)
- Place Precast Deck Slab Units/Girders

OUTSTANDING ISSUES WITH CONTRACTOR AND PROGRESS OF CONSTRUCTION:

- The project is back on schedule due to forming and pouring both Abutments simultaneously.



Sunny Jhutti, P.E., S.E.
Resident Engineer

cc: File: 28.03.01, GW, EE



Figure 1 – ACS performing Gamma Gamma Logging (CT-233) of CIDH Piles.



Figure 2 – American Water Jetting Repair of Abutment 1 – Pile #2.



Figure 3 – Grouting Inspection Tubes.



Figure 4 – Finished Grouting of Inspection Tubes at Abutment 2.



Figure 5 – Finished Grouting of Inspection Tubes at Abutment 1.



Figure 6 – Sawcutting wingwall near Abutment 2.



Figure 7 – Abutment 2 Bar Reinforcement Placement.



Figure 8 – Abutment 2 Bar Reinforcement Placement.

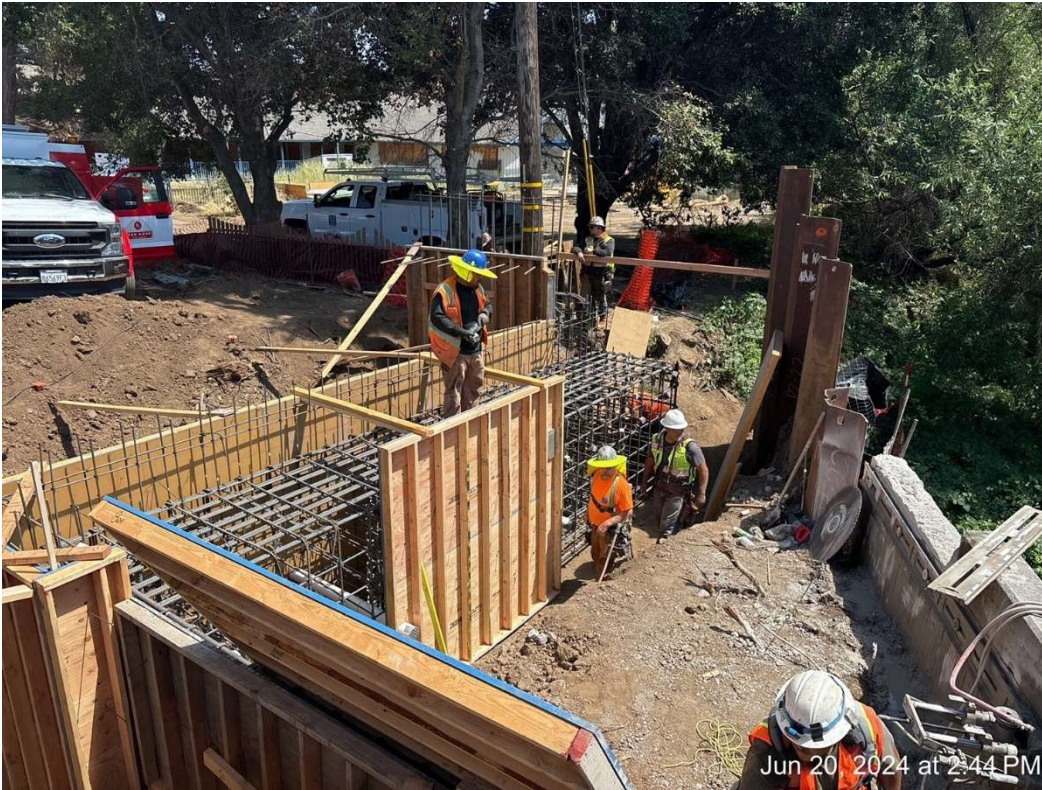


Figure 9 – Starting place face panels.

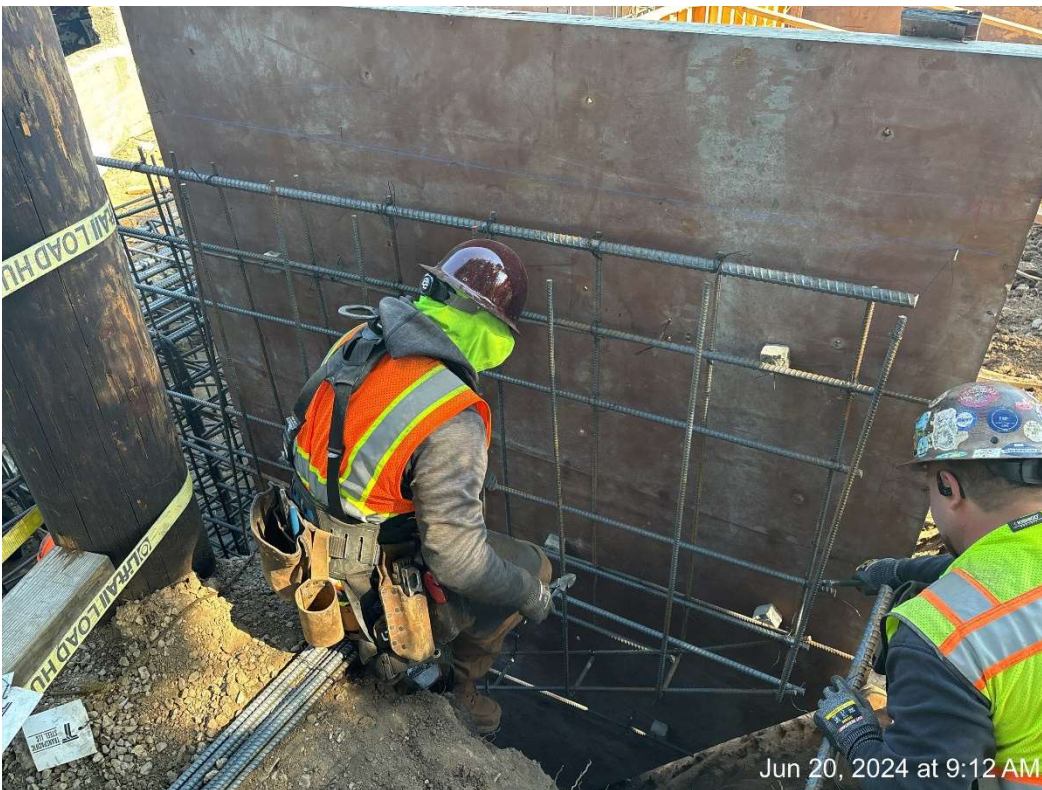


Figure 10 – Starting Wingwall Bar Reinforcement.



Figure 11 – Interior grade beam bar reinforcement.



Figure 12 – All buttoned up. Double Up Buckle Up.



Figure 13 – Bar Reinforcement Placed at Abutment 1.



Figure 14 – Getting ready for Double Up Buckle Up.



Figure 15 – Pouring Concrete at Abutment 1.



Figure 16 – Pouring Concrete at Abutment 1.



Figure 17 – Abutment 1 – Concrete Poured Out.



Figure 18 – Abutment 2 – Concrete Poured Out and Cure Applied.



Figure 19 – Forms stripped and backfill 2ft – Abutment 2.



Figure 20 – Forms stripped and backfill 2ft – Abutment 2.



Figure 21 – Backfilling at Abutment 2.



Figure 22 – Backfilling at Abutment 2.

CITY OF NOVATO - Grant Ave Bridge Rehabilitation Project
 3 Week Look Ahead
 6/24/2024 - CURRENT DATE



Minerva Construction

CPM			6/17	6/18	6/19	6/20	6/21	6/22	6/23	6/24	6/25	6/26	6/27	6/28	6/29	6/30	7/1	7/2	7/3	7/4	7/5	7/6	7/7	7/8	7/9	7/10	7/11	7/12
ID	Activity Description	SUB	M	T	W	T	F	Sa	Su	M	T	W	T	F	Sa	Su	M	T	W	T	F	Sa	Su	M	T	W	T	F
			History						Week 1						Week 2						Week 3							
	HOT RFIs and Submittals																											
	RFI # 014 - Existing Wall in Disrepair																				H	CH						
	RFI #017 - Storm Drain System Layout																				H	CH						
	Submittal 77-13-05 - Dewatering and Discharge Work Plan																				H	CH						
	Schedule of Work Stage 2/3/4																				H	CH						
	Bird Mitigation	Biomass		X																								
	CO AC Paving on Parking Lane									X	X							X			H	CH				X		
A1740	ST2/3-Form East Abutment (one side) #2	Minerva	X	X	X																H	CH						
A1780	ST2/3-Rebar East Abutment #2	TPS	X	X																	H	CH						
A1840	ST2/3-Form West Abut Concrete (one side) #1	Minerva			X	X	X														H	CH						
A1870	ST2/3-Rebar West Aabutment #2	TPS			X	X	X														H	CH						
A1740	ST2/3-Form East Abut Concrete (Double Up) #2	Minerva						X		X	X										H	CH						
A1840	ST2/3-Form West Abut Concrete (Double Up) #1	Minerva						X		X	X	X									H	CH						
A1900	ST2/3-Place Abutment Concrete, west side	Minerva												P?	P?	1	2	3	4	5	6	7	8	9	10	11	12	
A1800	ST2/3-Place Abutment Concrete, east side	Minerva												P?	P?	1	2	3	4	5	6	7	8	9	10	11	12	
A1940	ST2/3-Strip Abutment, west	Minerva													X						H	CH						
A1860	ST2/3-Strip Abutment, East	Minerva													X						H	CH						
A1680	ST2/3-Sawcut/Demo/Remove south edge (E)Abutment, bridge deck and barrier	Minerva													X		X	X	X	H	CH	X		X				
	Install Expanded Polystyrene at Various Locations	Minerva													X		X	X	X	H	CH	X		X				
A1980	ST2/3-Install Drainage, west (incl. Drainage Pad/CTPB/Geo Drain)	Minerva																X	X	H	CH	X		X	X			
A2740	ST2/3- Install drainage, east (incl. Drainage Pad/CTPB/Geo Drain)	Minerva																X	X	H	CH	X		X	X			
A1990	ST2/3-Backfill East Abutment and Retaining Wall (Inc. Structural Backfill)	Minerva																X	X	H	CH	X		X	X			
A2020	ST2/3- Backfill West Abutment and Wingwalls (Inc. Structural Backfill)	Minerva																X	X	H	CH	X		X	X	P		
A2050	ST2/3-Set Elastomeric bearing pads	Minerva																X	X	H	CH	X		X	X	G		
A2030	ST2/3-Establish Crane pads	Minerva																X	X	H	CH	X		X	X	E		
	Cut Sheet Piles	Minerva																			H	CH			X			
A2060	ST2/3-Set Deck Girders	Minerva																			H	CH					X	
A2070	ST2/3-Grout Deck Joints	Minerva																			H	CH						
A2160	ST2/3-Form/Place Abutment Shear Keys & back walls	Minerva																			H	CH					C	→
A1770	Build Access into Channel	Minerva																			H	CH					O	→
A1790	Install Water Diversion	Minerva																			H	CH					N	→
A1810	Fish rescue	Biomass																			H	CH					F	→
A1850	Excavate West channel subgrade	Minerva																			H	CH					A	→
A1930	Install west Type A RSP and Fabric	Minerva																			H	CH					B	→