



City of Novato Redistricting Update

November 9, 2021

Doug Yoakam, Consultant
National Demographics Corporation

Redistricting Process

Step	Description
Census Data Release August 12, 2021	<ul style="list-style-type: none">• Census Bureau releases official 2020 Census population data
California Data Release September 27, 2021	<ul style="list-style-type: none">• California Statewide Database releases California's official 'prisoner-adjusted' 2020 redistricting data
Public Hearing #1 September 28, 2021	<ul style="list-style-type: none">• Held prior to release of draft maps• Educate, solicit input on neighborhoods and Communities of Interest
Public Hearing #2 November 9, 2021	<ul style="list-style-type: none">• Held prior to release of draft maps• Educate, solicit input on neighborhoods and Communities of Interest• Public release of Novato mapping tools

Redistricting Process (continued)

Step	Description
Deadline for Public to Submit Draft Maps January 11, 2022	<ul style="list-style-type: none">• Two weeks prior to first draft map hearing
Public Hearing #3 January 25, 2022	<ul style="list-style-type: none">• Held after release of draft maps• Educate, solicit input on neighborhoods and Communities of Interest• Discuss, revise draft maps
Final Deadline for Public to Submit Draft Maps February 1, 2022	<ul style="list-style-type: none">• Two weeks prior to second draft map hearing
Public Hearing #4 February 15, 2022	<ul style="list-style-type: none">• Held after release of draft maps• Educate, solicit input on the communities in the districts• Adopt Final Map

Redistricting Rules and Goals

1. Federal Laws

- ❑ Equal Population
- ❑ Federal Voting Rights Act
- ❑ No Racial Gerrymandering



2. California Criteria for Cities

1. Geographically contiguous
2. Undivided neighborhoods and “communities of interest”
3. Easily identifiable boundaries
4. Compact

Prohibited: “Shall not favor or discriminate against a political party.”

3. Other Traditional Redistricting Principles

- ❑ Respect voters’ choices / continuity in office
- ❑ Use Current districts as a basis
- ❑ Future population growth

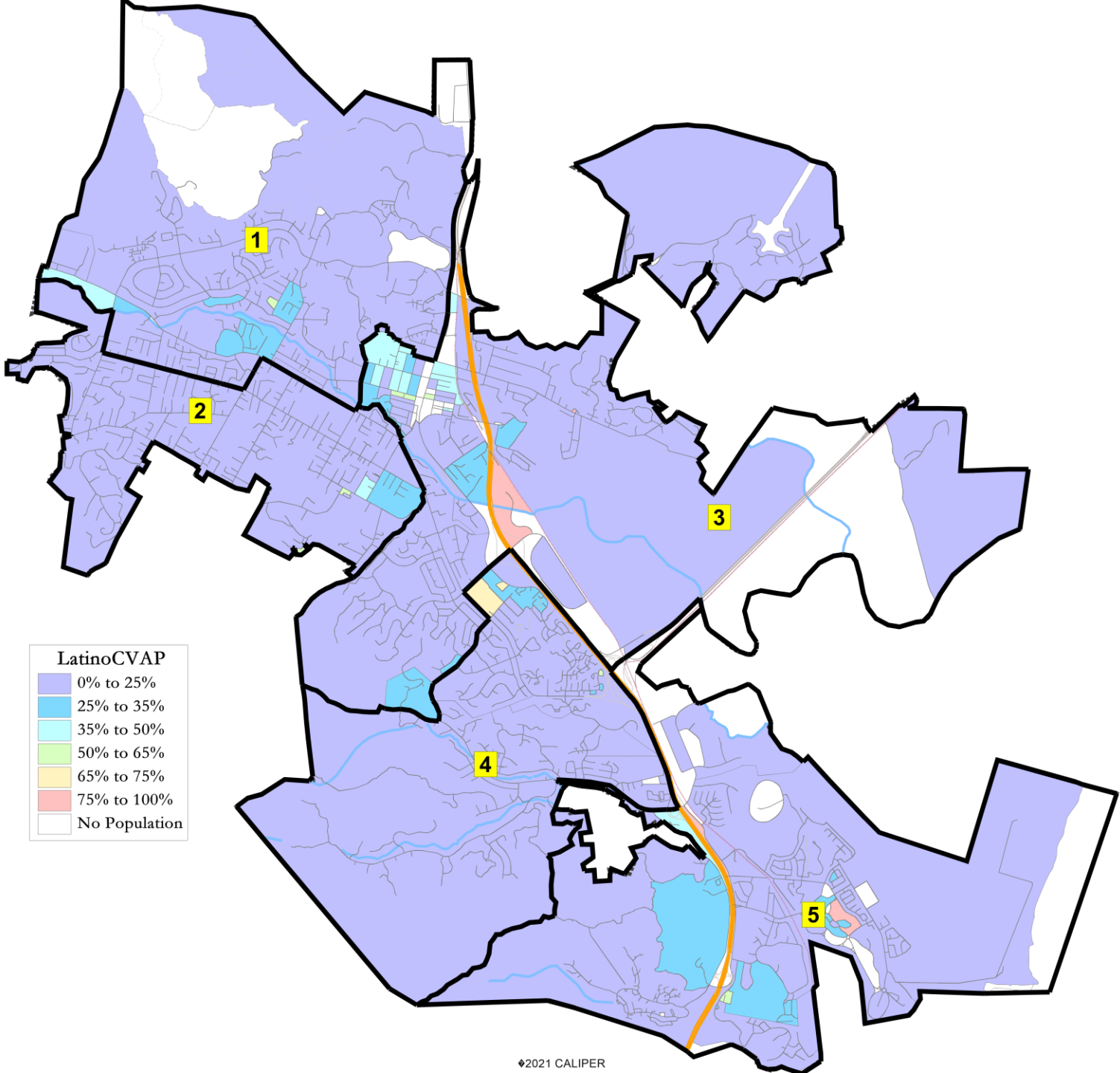
Novato - 2020 Federal Census Total Population Estimates

District		1	2	3	4	5	Total
2020 Census	Total Population	11,040	10,612	11,469	10,070	10,034	53,225
	Population Deviation	395	-33	824	-575	-611	1,435
	Pct. Deviation	3.71%	-0.31%	7.74%	-5.40%	-5.74%	13.48%
Total Pop (OMB Allocation Method)	Latino	19%	22%	28%	26%	34%	26%
	NH White	65%	63%	57%	57%	48%	58%
	NH Black	3%	3%	3%	3%	5%	3%
	NH Asian/Pac.Isl.	10%	8%	9%	11%	10%	10%
	NH Native Amer.	1%	1%	1%	1%	1%	1%

Novato - Statewide Adjusted Census Data

Novato Existing Districts (Statewide Adjusted Census Data)

District		1	2	3	4	5	Total
	Total Pop	11,047	10,621	11,480	10,080	10,044	53,272
	Deviation from ideal	393	-33	826	-574	-610	1,436
	% Deviation	3.69%	-0.31%	7.75%	-5.39%	-5.73%	13.48%
Total Pop	% Hisp	18.70%	22%	28%	26%	34%	26%
	% NH White	65%	63%	57%	57%	48%	58%
	% NH Black	3%	3%	3%	3%	5%	3%
	% Asian-American	10%	8%	9%	10%	10%	9%



Defining Neighborhoods

1st Question: What are the attributes or characteristics of your neighborhood?

2nd Question: What are its geographic boundaries?

Examples of physical features defining a neighborhood boundary:

- Natural neighborhood dividing lines, such as highway or major roads, rivers, canals and/or hills
- Areas around parks or schools
- Other neighborhood landmarks

In the absence of public testimony, planning records and other similar documents may provide definition.



Beyond Neighborhoods: Defining Communities of Interest

1st Question: What defines your community?

- Geographic Area, plus
- Shared issue or characteristic
 - Shared social or economic interest
 - Impacted by city policies
- Tell us “your community’s story”

2nd Question: Would this community benefit from being “included within a single district for purposes of its effective and fair representation”?

- Or would it benefit more from having multiple representatives?

Definitions of Communities of Interest may not include relationships with political parties, incumbents, or political candidates.

Public Mapping and Map Review Tools

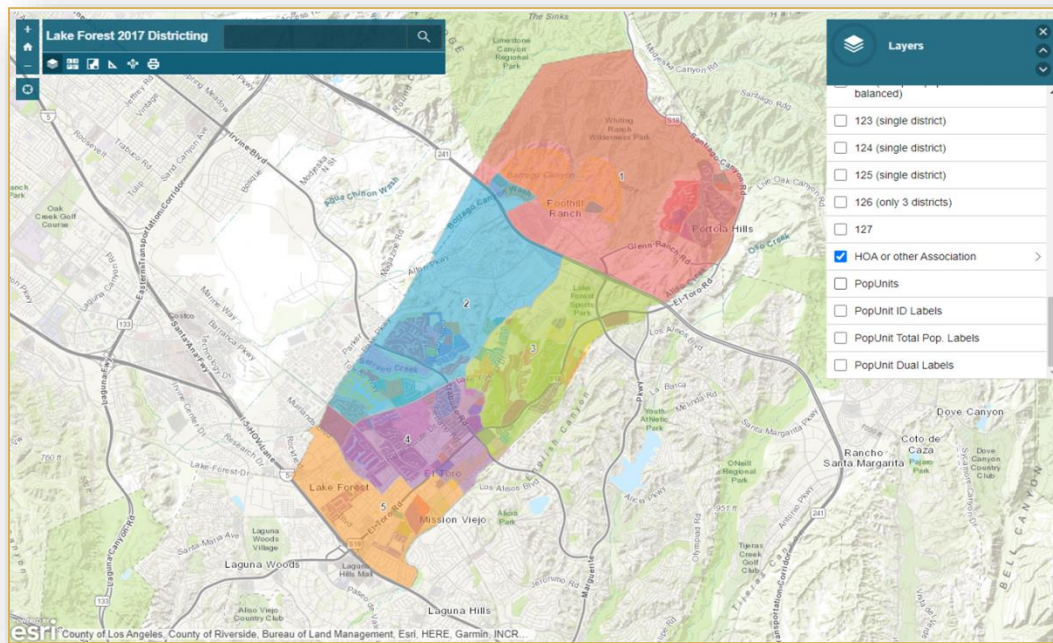
- **Different tools for different purposes**
- **Different tools for different levels of technical skill and interest**
 - Simple “review draft maps” tool
 - Easy-to-use “Draw your neighborhood” tool (Dave’s Redistricting App)
 - Paper- and Excel-based simple “Draw a draft map” tools

Whether you use the online mapping tool, Excel, the paper kit, or just draw on a napkin, we welcome your maps!

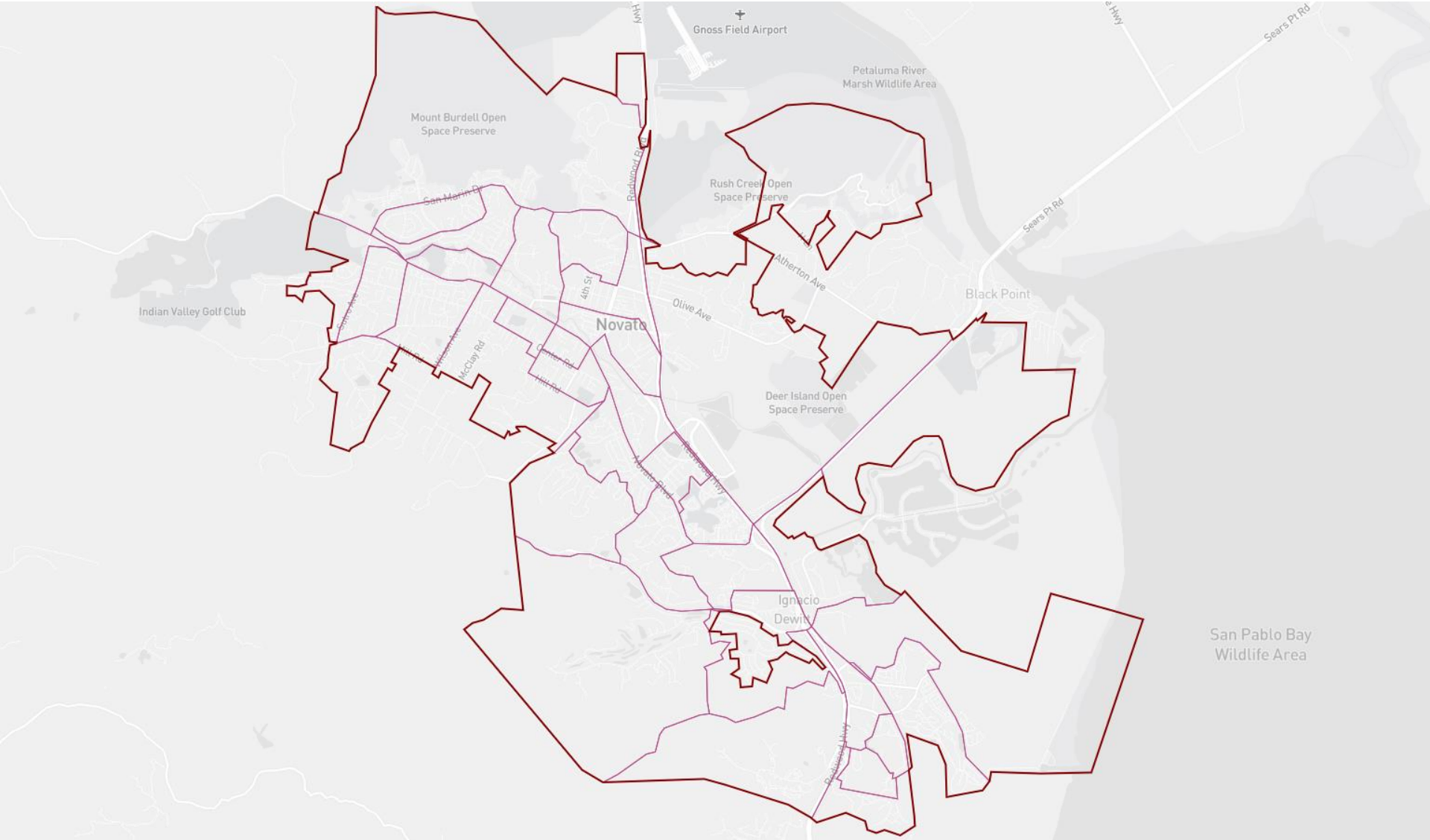
Simple Map Review Tool

Online Interactive Review Map

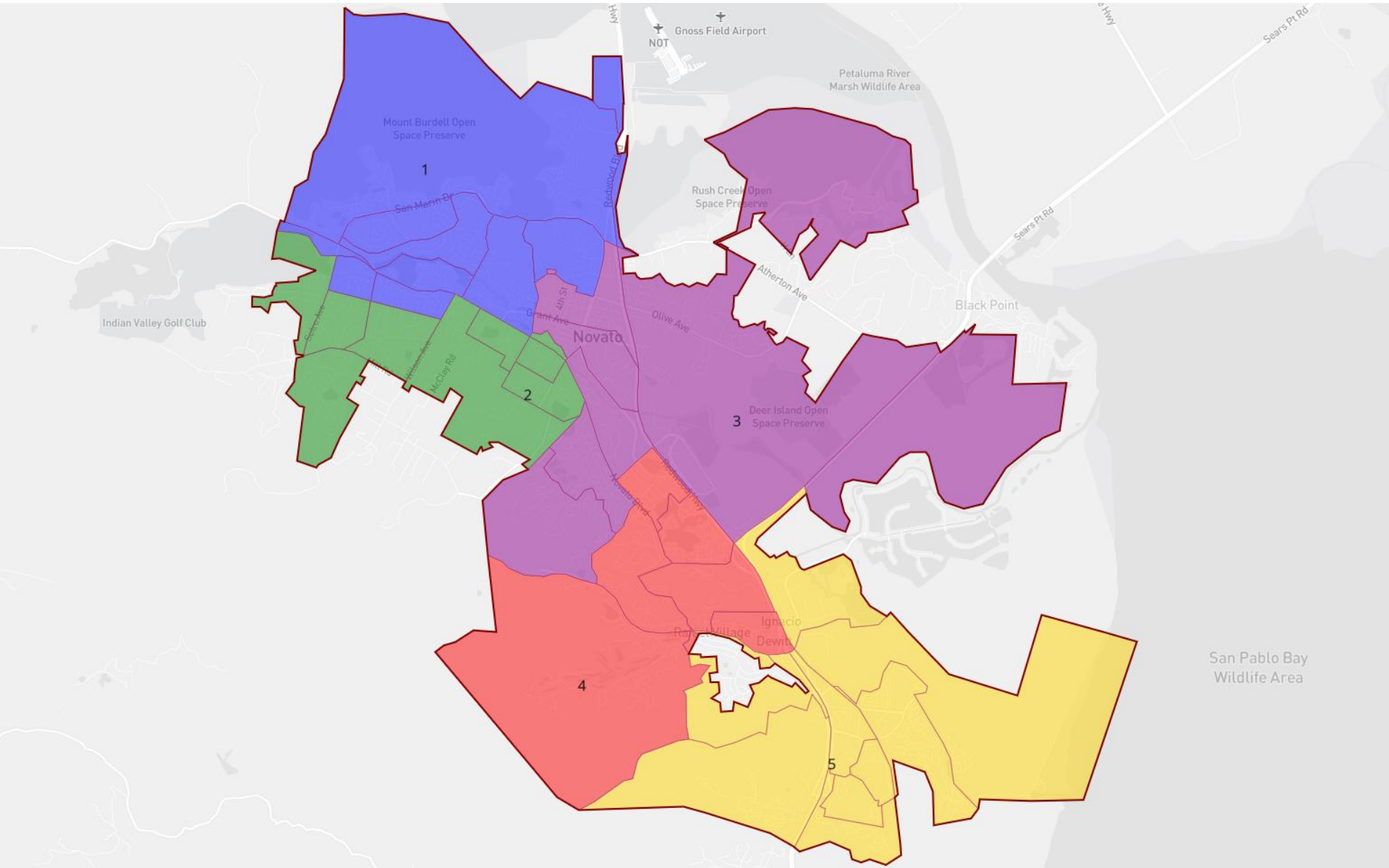
- ESRI's "ArcGIS Online" – similar to Google Maps in ease of use
- Used to review, analyze and compare maps, not to create them



Dave's Redistricting App - Novato



Dave's Redistricting App – Novato Current Districts



Simple Map Drawing Tool

Paper “Public Participation Kit”

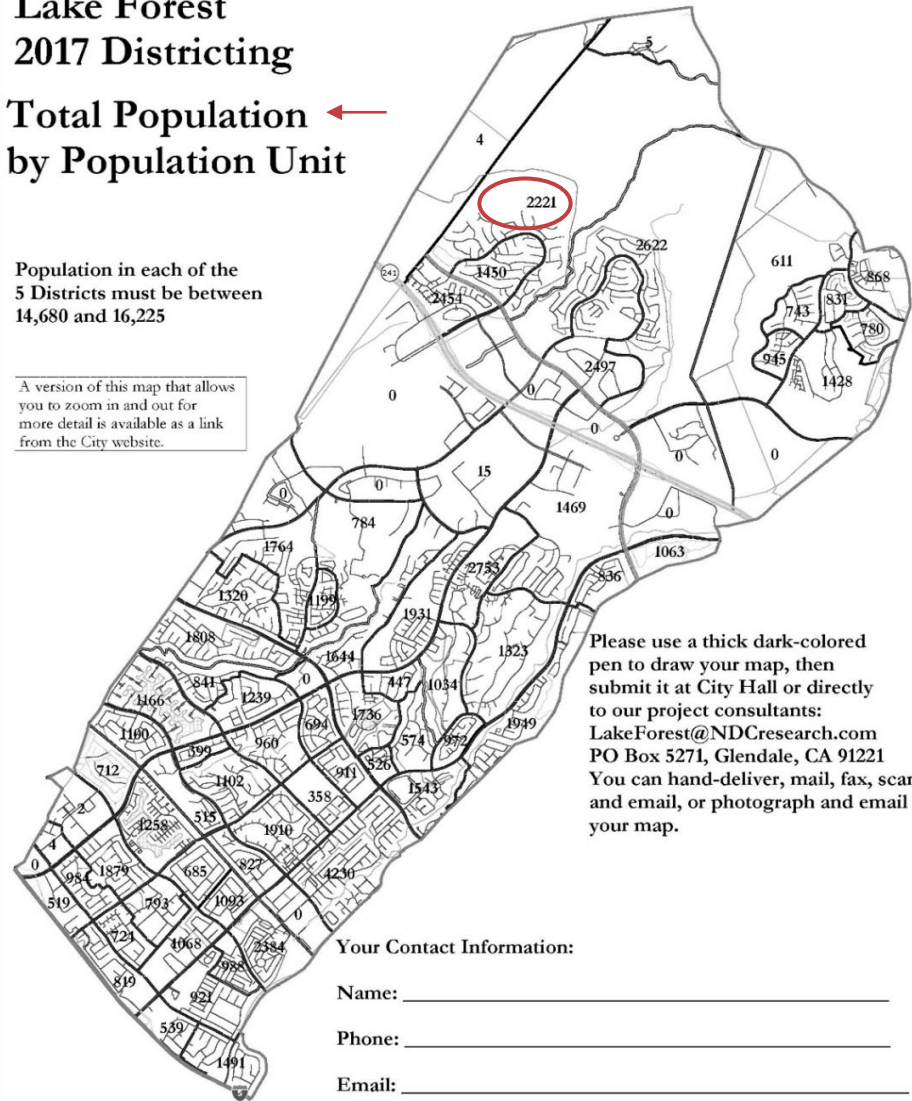
- For those without internet access or who prefer paper
- Total Population Counts only – no demographic numbers

Lake Forest 2017 Districting

Total Population ← by Population Unit

Population in each of the 5 Districts must be between 14,680 and 16,225

A version of this map that allows you to zoom in and out for more detail is available as a link from the City website.



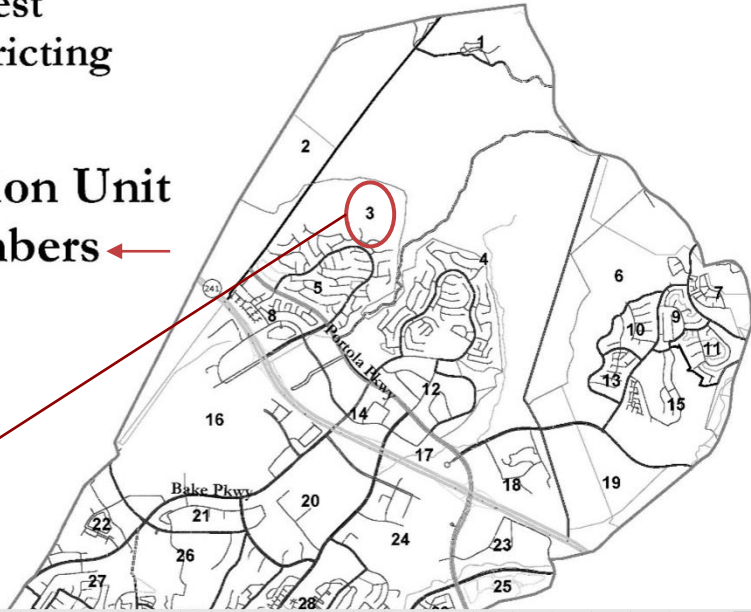
Simple Map Drawing Tool + Excel Supplement

“Public Participation Kit”

- For those who know Excel and do not wish to use online tools
- Adds CVAP data
- Excel does the math

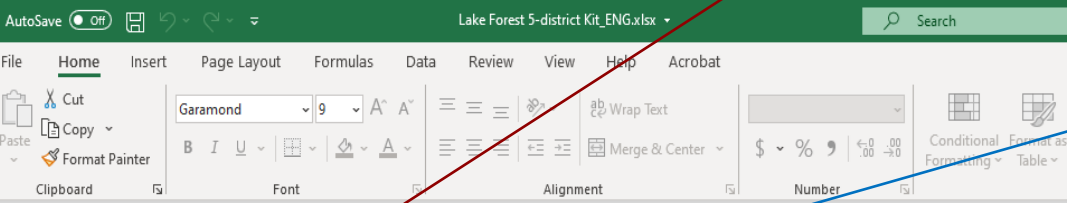
Lake Forest
2017 Districting

Population Unit
ID Numbers



		Counts							Percentages												
Group	Category	1	2	3	4	5	6	7	Unassigned	Total	1	2	3	4	5	6	7	Unassigned	Total		
Tot. Pop.		0	0	0	0	0	0	0	107,197	107,197											
Total Population		34,182	64,294	1,919	4,530	83,090	22,928	33,657	3,401	4,530	31.8%	59.8%	1.9%	4.4%	7.6%	2.1%	28.3%	32%	60%	2%	
Total CVAP		0	0	0	0	0	0	0	83,090	83,090	0%	0%	0%	0%	0%	0%	0%	0%	0%	0%	0%
Total Reg.		0	0	0	0	0	0	0	13,374	13,374	0%	0%	0%	0%	0%	0%	0%	0%	0%	0%	0%

Distict (1-7)		Unit	Total Population					Voting Age Population					Citizen Voting Age Population					Nor. 2014 Registration				
Pop	Hisp	Wht	Blk	NH	Asn	total	Hisp	Wht	Blk	Asn	tot	Hisp	Wht	Blk	Asn	tot	latino	asn	fil	tot		
1	1,216	642	557	18	15	873	397	442	12	831	390	441	0	0	574	195	7	3	245	63		
2	2,367	1,128	1,053	43	96	1,784	741	899	74	1,915	730	1,140	0	45	1,299	435	14	7	555	140		
3	1,643	768	278	42	25	1,036	741	236	15	400	235	145	0	20	505	286	3	4	161	73		
4	1,768	734	855	62	84	1,272	464	685	62	1,231	461	639	19	111	1,022	366	11	11	391	89		
5	2,001	209	1,655	14	79	1,639	144	1,392	64	1,511	88	1,337	12	38	1,776	146	46	7	1,089	67		
6	612	56	499	4	39	517	37	440	26	471	22	423	3	15	525	38	15	2	337	18		
7	1,753	1,180	501	90	10	1,945	767	494	10	780	335	440	0	0	777	398	7	4	241	70		



Your own mapping software?

Feel free to submit using your own mapping software:

- 1) A GIS Shapefile and/or a Census Block equivalency file (w/2020 Census Blocks);
- 2) A description of the choices and key points of your map; and,
- 3) Send to the City of Novato redistricting email address: novatocouncil@novato.org

Public Comments and Questions