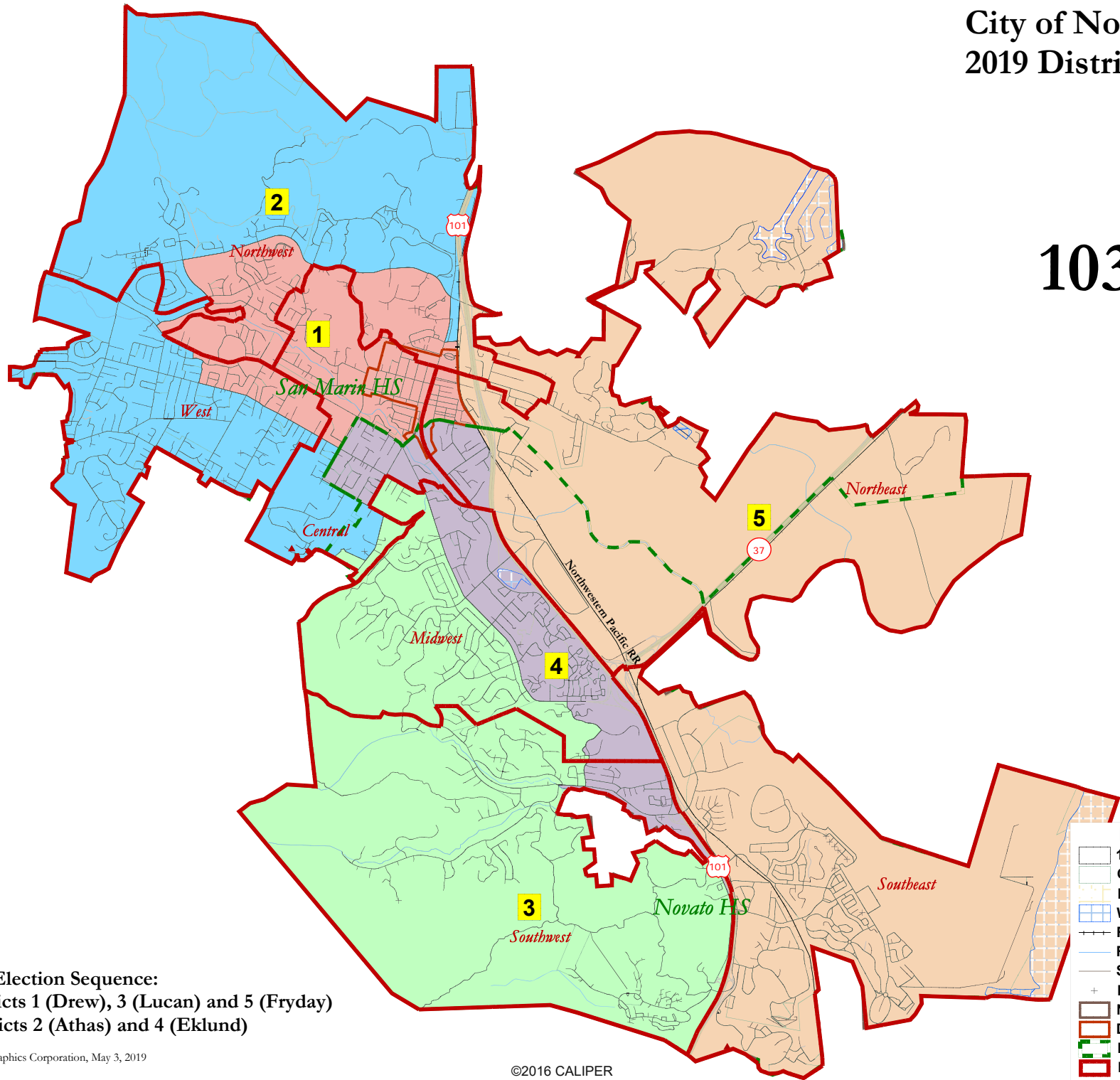


City of Novato 2019 Districting

103



Proposed Election Sequence:
 2019: Districts 1 (Drew), 3 (Lucan) and 5 (Fryday)
 2022: Districts 2 (Athas) and 4 (Eklund)

Map layers

	103
	Census Block
	Landmark Area
	Water Area
	Railroad
	River
	Streets
	Landmark Point
	Novato
	Downtown
	High School Zones
	IdentityReportArea

National Demographics Corporation, May 3, 2019

City of Novato - Map 103

District		1	2	3	4	5	Total
<u>Ideal</u>	Total Pop	10,476	10,427	10,358	10,534	10,109	51,904
10,381	Deviation from ideal	95	46	-23	153	-272	425
	% Deviation	0.92%	0.44%	-0.22%	1.47%	-2.62%	4.09%
Total Pop	% Hisp	26%	9%	17%	34%	20%	21%
	% NH White	61%	81%	72%	50%	64%	66%
	% NH Black	3%	2%	2%	5%	4%	3%
	% Asian-American	8%	6%	7%	9%	10%	8%
Citizen Voting Age Pop	Total	7,807	8,854	7,881	6,409	6,720	37,671
	% Hisp	15%	5%	10%	12%	13%	11%
	% NH White	74%	85%	80%	70%	72%	77%
	% NH Black	3%	2%	2%	5%	3%	3%
	% Asian/Pac.Isl.	6%	8%	7%	10%	11%	8%
Voter Registration (Nov 2016)	Total	6,116	7,210	6,786	5,160	6,059	31,331
	% Spanish-Surnamed	9%	7%	8%	11%	10%	9%
	% Asian-Surnamed	3%	3%	4%	4%	4%	4%
	% Filipino-Surnamed	1%	1%	1%	1%	1%	1%
	% NH White est.	82%	85%	84%	76%	78%	81%
	% NH Black	3%	1%	2%	6%	3%	3%
Voter Turnout (Nov 2016)	Total	5,281	6,433	5,942	4,435	5,215	27,306
	% Spanish-Surnamed	9%	6%	7%	10%	9%	8%
	% Asian-Surnamed	3%	3%	4%	4%	4%	3%
	% Filipino-Surnamed	1%	1%	1%	1%	1%	1%
	% NH White est.	83%	86%	85%	77%	79%	82%
	% NH Black	3%	1%	2%	6%	3%	3%
Voter Turnout (Nov 2014)	Total	3,053	4,120	3,724	2,369	3,117	16,384
	% Spanish-Surnamed	6%	5%	4%	7%	6%	5%
	% Asian-Surnamed	3%	2%	3%	4%	3%	3%
	% Filipino-Surnamed	1%	1%	1%	1%	1%	1%
	% NH White est.	87%	90%	91%	84%	86%	88%
	% NH Black est.	2%	0%	1%	4%	3%	2%

Total population data from the 2010 Decennial Census. Citizen Voting Age Pop. data from the 2012-2016 American Community Survey and Special Tabulation 5-year data.