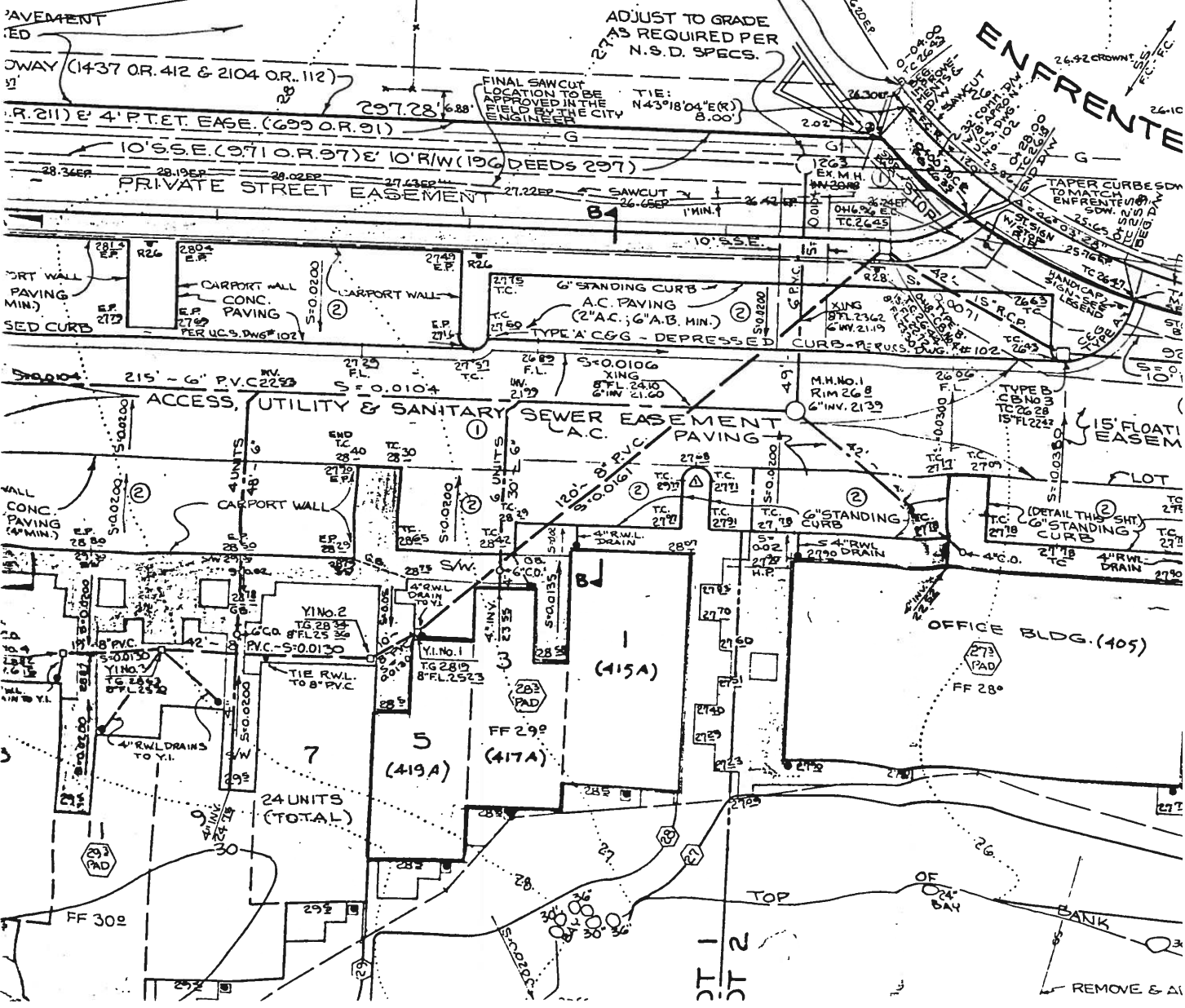


DETAIL



EXTI
FACE
CAR

TYPE A
GUTTE
(MONOL

MATCH LIP OF GUTTER
WITH EXIST. E.P.

ADJUST TO GRADE
AS REQUIRED PER
N.S.D. SPECS.

FINAL SAWCUT
LOCATION TO BE
APPROVED IN THE
FIELD BY THE CITY
ENGINEER

ENTRENTE

PORT WALL
PAVING
MIN.)
SED CURB

CARPOT WALL
CONC.
PAVING
PER U.C.S. DWG. NO. 102

CARPOT WALL
CONC.
PAVING
PER U.C.S. DWG. NO. 102

6" STANDING CURB
A.C. PAVING
(2" A.C.; 6" A.B. MIN.)
TYPE 'A' CGG - DEPRESS

6" STANDING CURB
A.C. PAVING
(2" A.C.; 6" A.B. MIN.)
TYPE 'A' CGG - DEPRESS

6" STANDING CURB
A.C. PAVING
(2" A.C.; 6" A.B. MIN.)
TYPE 'A' CGG - DEPRESS

6" STANDING CURB
A.C. PAVING
(2" A.C.; 6" A.B. MIN.)
TYPE 'A' CGG - DEPRESS

ACCESS, UTILITY & SANITARY
SEWER EASEMENT
A.C. PAVING

TYPE B
CURB
TC 26.28
15" FL 22.43

4 UNITS
CARPOT WALL

6 UNITS
CARPOT WALL

6 UNITS
CARPOT WALL

15' FLOAT
EASEM

Y1No.2
TG 28.34
8" FL 25.30

Y1No.1
TG 28.19
8" FL 25.23

4" RWL DRAIN
TO Y.I.

OFFICE BLDG. (105)

24 UNITS
(TOTAL)

FF 299
(417A)

FF 280

FF 280

FF 302

FF 299

FF 280

FF 280

FF 302

FF 299

FF 280

FF 280

FF 302

FF 299

FF 280

FF 280

FF 302

FF 299

FF 280

FF 280

FF 302

FF 299

FF 280

FF 280

FF 302

FF 299

FF 280

FF 280