

PG&E PIPELINE SAFETY INITIATIVE TREE MITIGATION

City Council Meeting

February 28, 2017

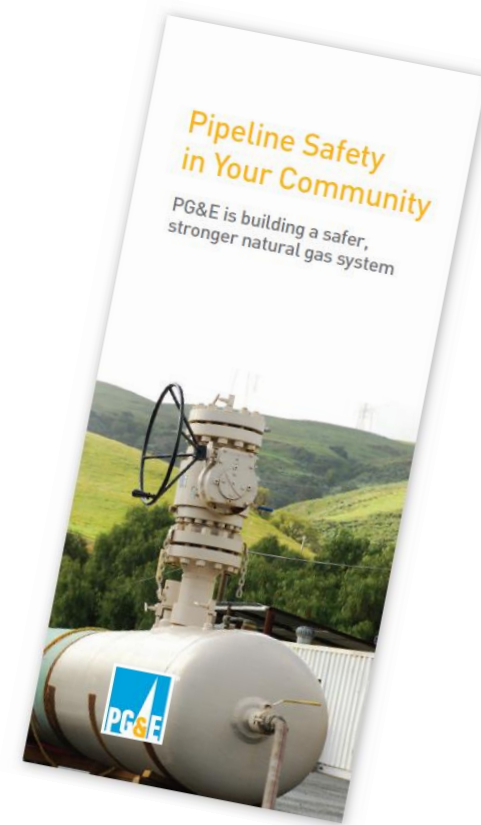


THE CITY OF
NOVATO
CALIFORNIA

TONIGHT'S MEETING

PG&E Community Pipeline Safety Initiative – Tree Mitigation

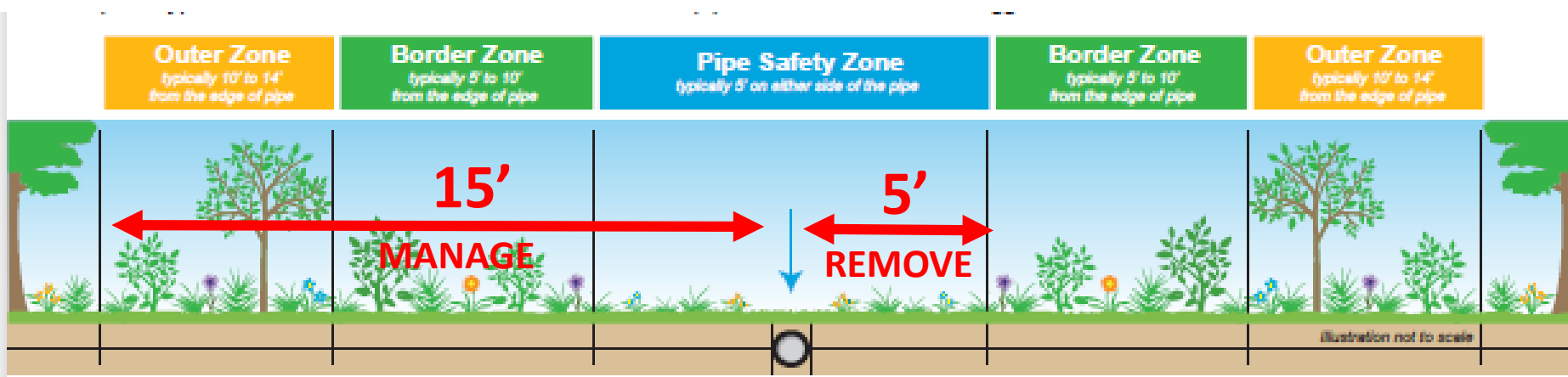
- **Approve proposed tree removal mitigation for the PG&E Community Pipeline Safety Initiative Project**



BACKGROUND

PG&E Community Pipeline Safety Initiative – Tree Mitigation

- PG&E rep's presented the project July 12, 2016
- Community Pipeline Safety Initiative including their *2016 Outreach Plan*
- Pipeline Safety Setbacks:



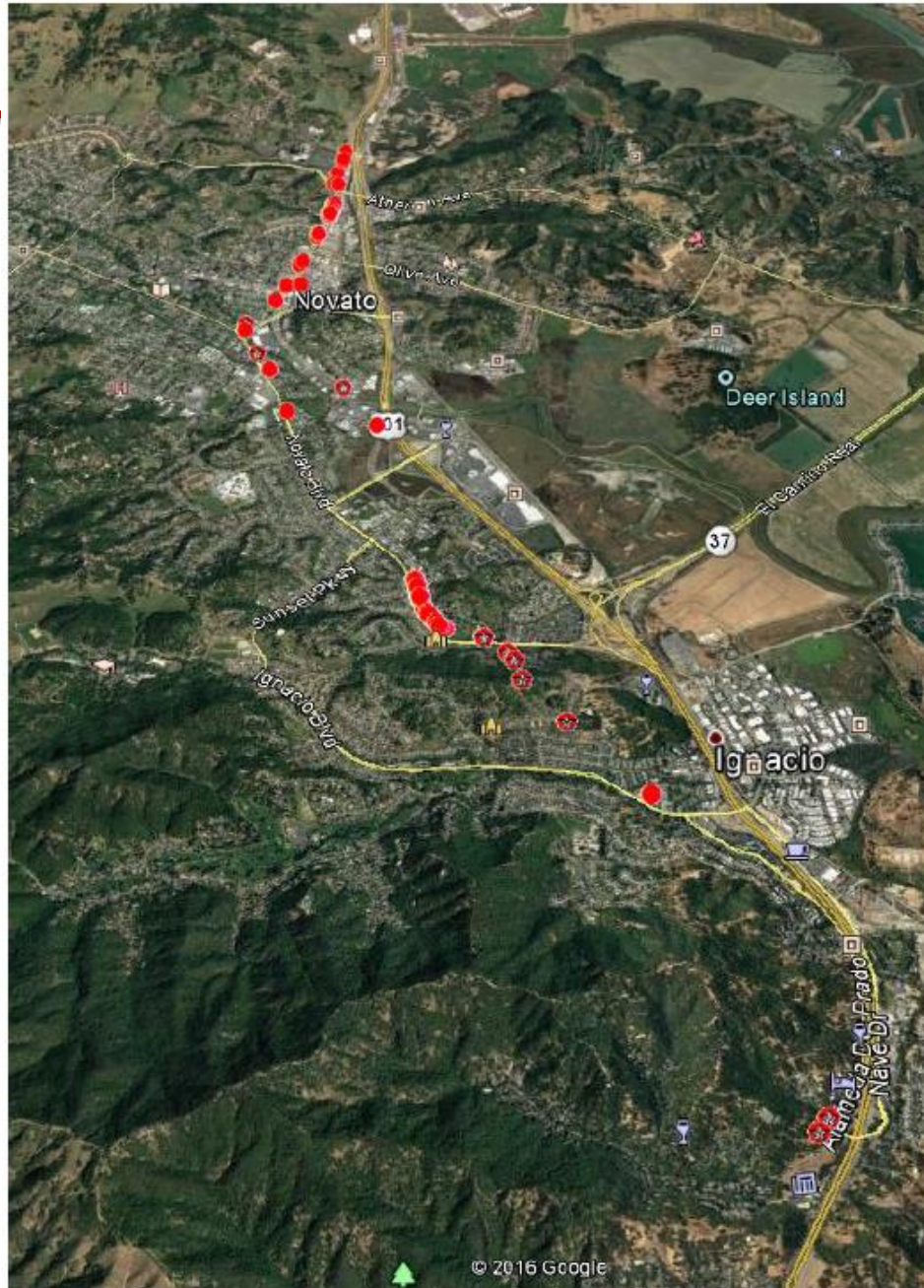
BACKGROUND

PG&E Community Pipeline Safety Initiative – Tree Mitigation

- PG&E funded a position in the Community Development Department to process tree removal permits on **140 private properties**
- PG&E's Arborist Reviewed:
 - 614** trees in r/w or on Public Land
 - 114** trees within 5-feet
 - 67** trees less than 4" in dia.
 - 23** trees less than 1" in dia.
 - 91 trees over 1-inch dia. proposed mitigated**

TREE REMOVALS

Locations - Citywide



TREE REMOVALS

Locations – North Area



TREE REMOVALS

Locations – Central Area



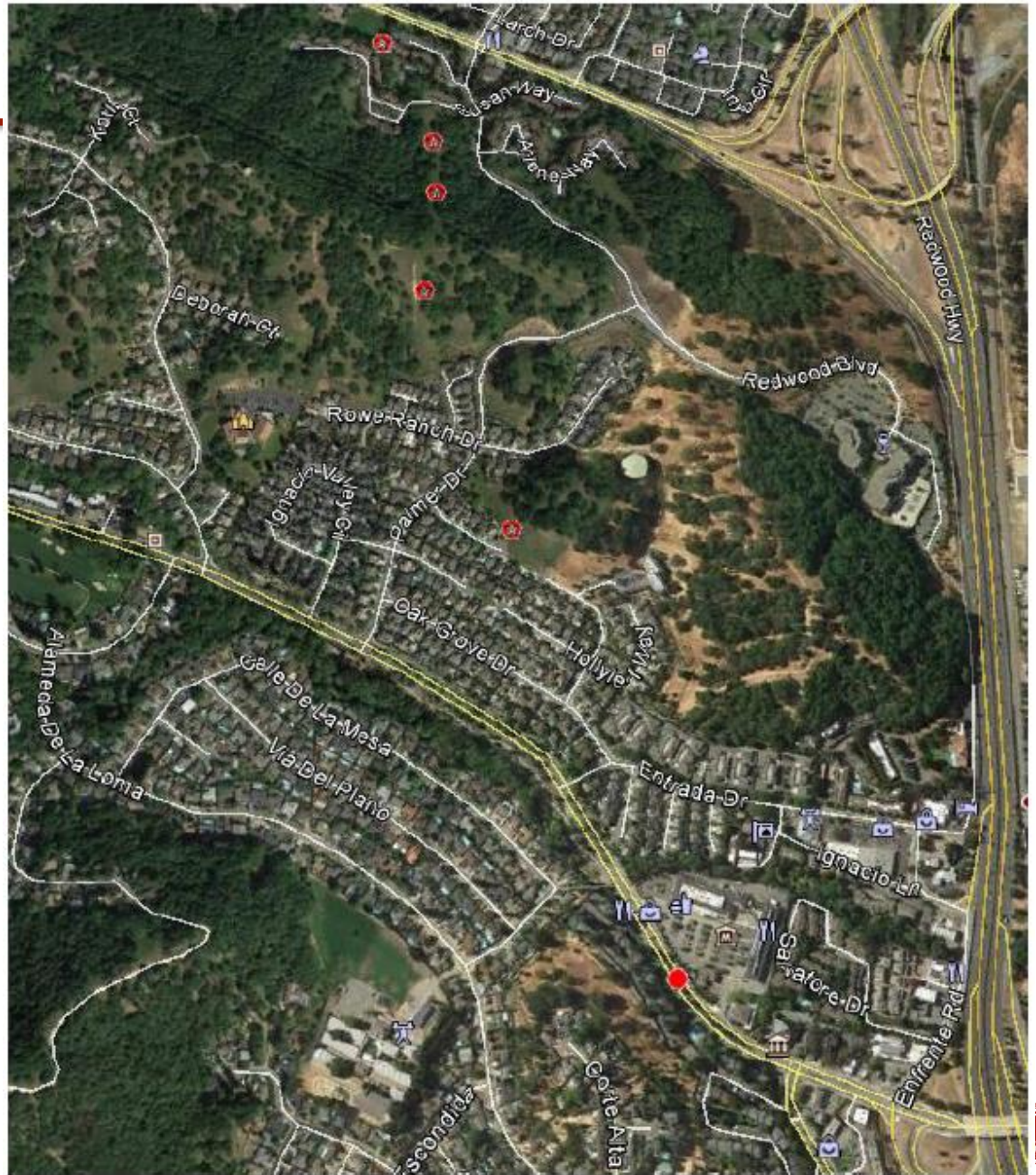
TREE REMOVALS

Locations – Cheda Knolls Area



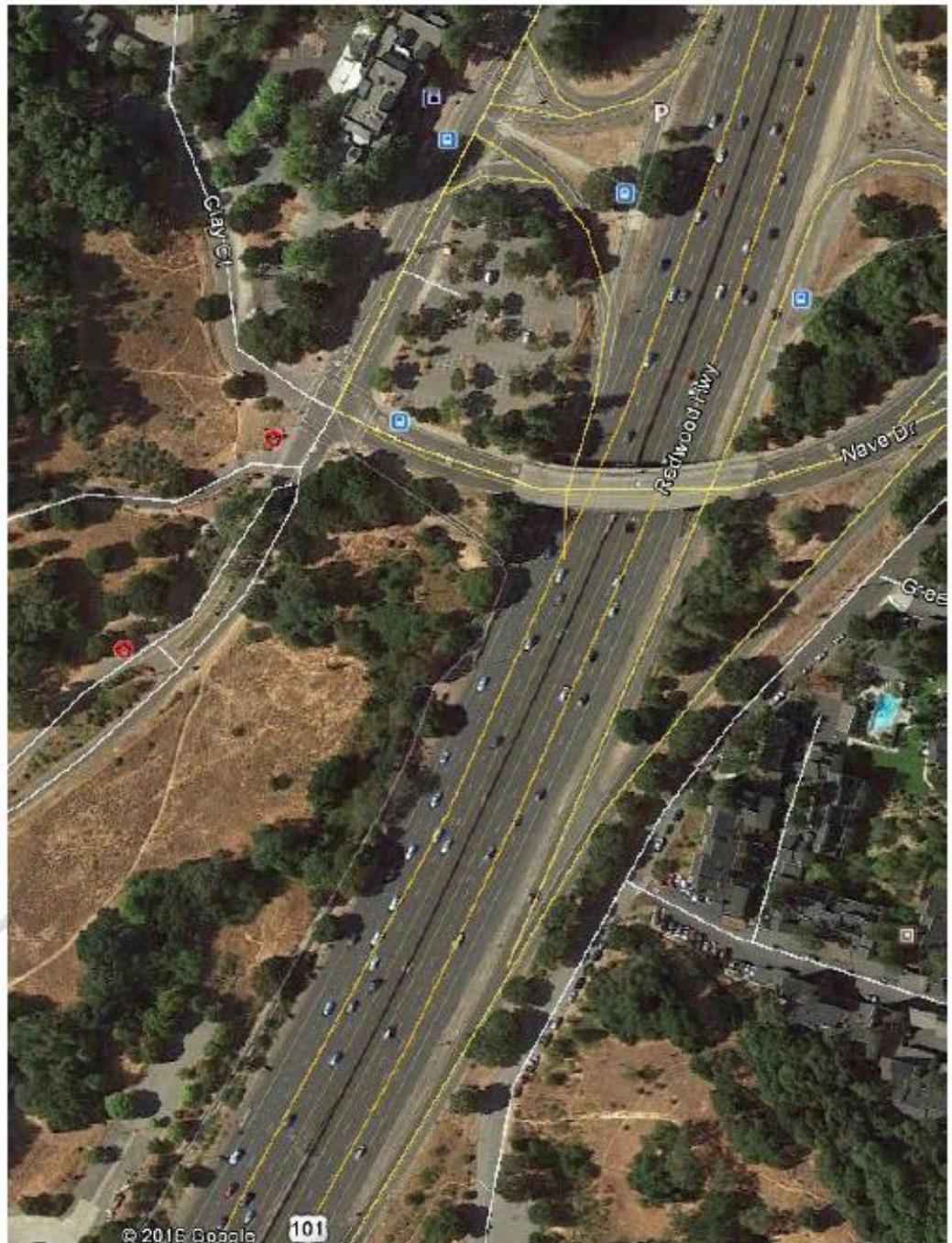
TREE REMOVALS

Locations – Pointe Marin Area



TREE REMOVALS

Locations – Pacheco Valle Area



HERITAGE TREES

PG&E Community Pipeline Safety Initiative – Tree Mitigation

What is the City “**Tree Policy**”?

Chapter 17 – Novato Municipal Code

- Tree and shrub removals on private property
- Permits required for trees 6” trunks or larger
- **“Heritage Tree”**: **24” or larger**

7 trees within R/W or Public Land = Heritage Trees

HERITAGE TREES

PG&E Community Pipeline Safety Initiative – Tree Mitigation



TREE MITIGATION

PG&E Community Pipeline Safety Initiative – Tree Mitigation

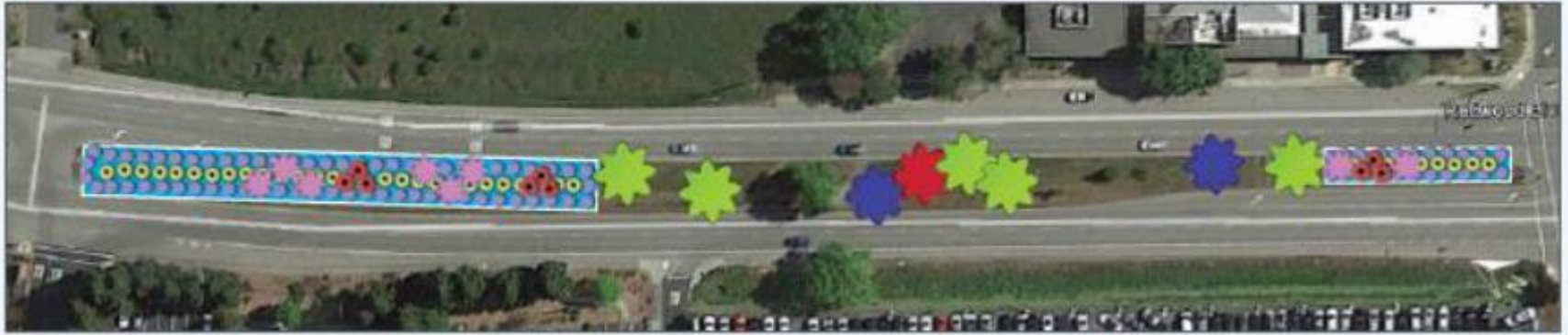
- Categorically Exempt from CEQA
- Negotiated to \$1,100 per tree over 1” dia.
- 91 trees x \$1,100 = \$100,100
- Proposed In-Lieu Project:



PROPOSED MITIGATION

PG&E Community Pipeline Safety Initiative – Tree Mitigation

Conceptual Restoration Plan



PROPOSED MITIGATION

PG&E Community Pipeline Safety Initiative – Tree Mitigation

❖ Were trees marked in the field?

No, PG&E provided detailed location and tree information and reviewed tree-by-tree with Staff

❖ Why not closer to removal sites?

** So. Novato Blvd and Redwood Blvd constrained*

** Need to achieve 15-foot clear area*

❖ What type of replacement trees will be planted?

Native trees from City Street Tree List, Oak and Redwoods likely to fit Redwood Blvd Corridor

❖ Will PG&E maintain the trees?

Standard 12-month warranty period

OUTREACH

PG&E Community Pipeline Safety Initiative – Tree Mitigation

- PG&E has been actively engaged for 12-months
- Cooperated with City Staff:
 - *July 2016 Presentation to Council*
 - *City Website – “Hot Topics”*
 - *E-notifications*
 - *NextDoor*
 - *Mailed Information Brochures*
 - *Face-to-face meetings*
 - *2016 Outreach Plan*

FISCAL IMPACT

PG&E Community Pipeline Safety Initiative – Tree Mitigation

Minimal Cost Increase

- PG&E has reimbursed / mitigated City Staff costs
- Short-term irrigation increase (\$300/year)
- +30 hours per year spray/prune/weed/mulch

RESOLUTION CLARIFICATION

PG&E Community Pipeline Safety Initiative – Tree Mitigation

Last Whereas:

*WHEREAS, as mitigation for the tree removals PG&E has agreed to pay the City of Novato \$1,100 per tree removed **for 91 trees 1-inch in diameter or greater**, and will design and install median landscaping improvements up to an amount equivalent to the aggregate mitigation fee of \$100,100; and,*



ALTERNATIVES

PG&E Community Pipeline Safety Initiative – Tree Mitigation

Mitigation Alternatives:

1. Receive PG&E funds, instruct Staff to implement separate tree mitigation
2. Reduce or Increase per tree mitigation fee
3. Provide alternative mitigation concept
4. Waive mitigation fee

QUESTIONS?



THE CITY OF
NOVATO
CALIFORNIA