

DOGBONE MEADOW

DOG PARK IMPROVEMENT PROJECT

RECREATION, CULTURAL
& COMMUNITY SERVICES COMMISSION
MAY 12, 2016

AGENDA

- Project History
- Our Progress
- Concept Plan Overview
- Discussion

PROJECT PURPOSE



GOALS

- Enhance amenities
- Improve site accessibility
- Provide for active recreation
- Minimize maintenance Need
- Review health/safety concern
- Use water efficiently
- Consider expansion opportunity

EXISTING CONDITIONS



CONCEPT DEVELOPMENT & FINDINGS

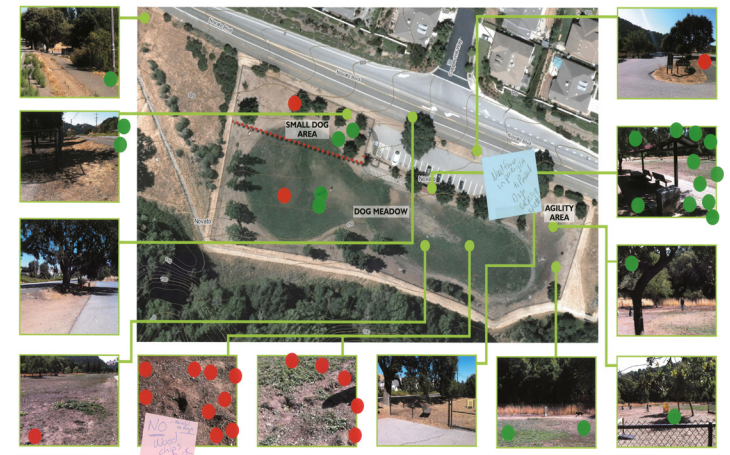
FINDINGS:

- Repair turf, gopher damage
- Improve ADA site accessibility
- Improve entry/exit access
- Improve restroom access
- Improve walking loop trail
- Bare dirt & turf preferred
- Maintain and provide shade
- Improve site drainage
- Provide secondary entry/exit
- Improve pet waste stations
- Provide drinking fountains
- Provide dog wash area
- Provide additional parking
- Improve signage
- Review walnut trees hazards
- Review concern for lighting

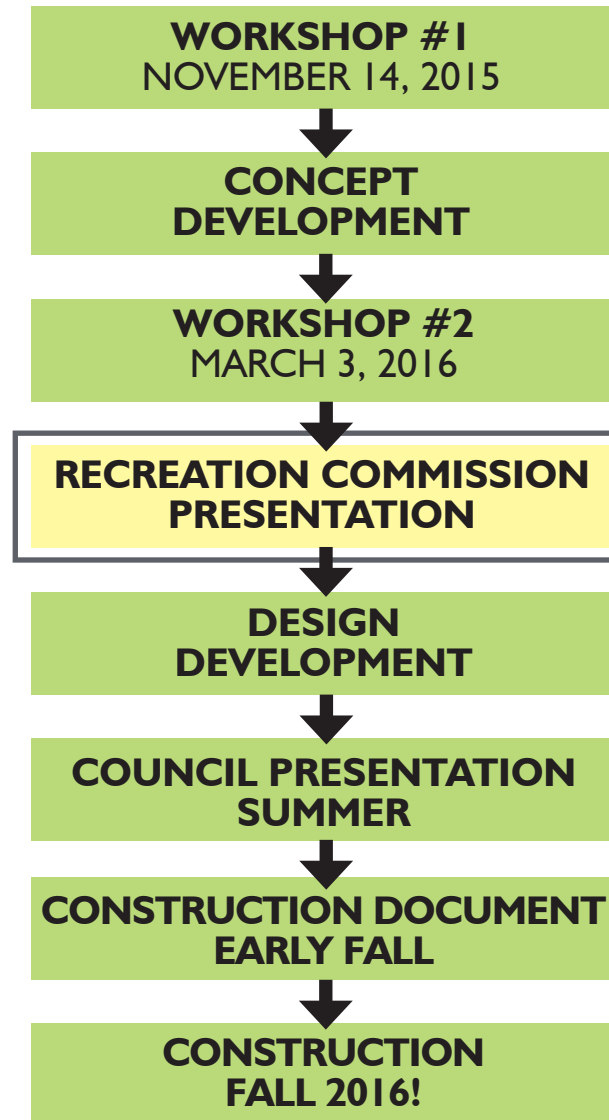


EXISTING ELEMENTS

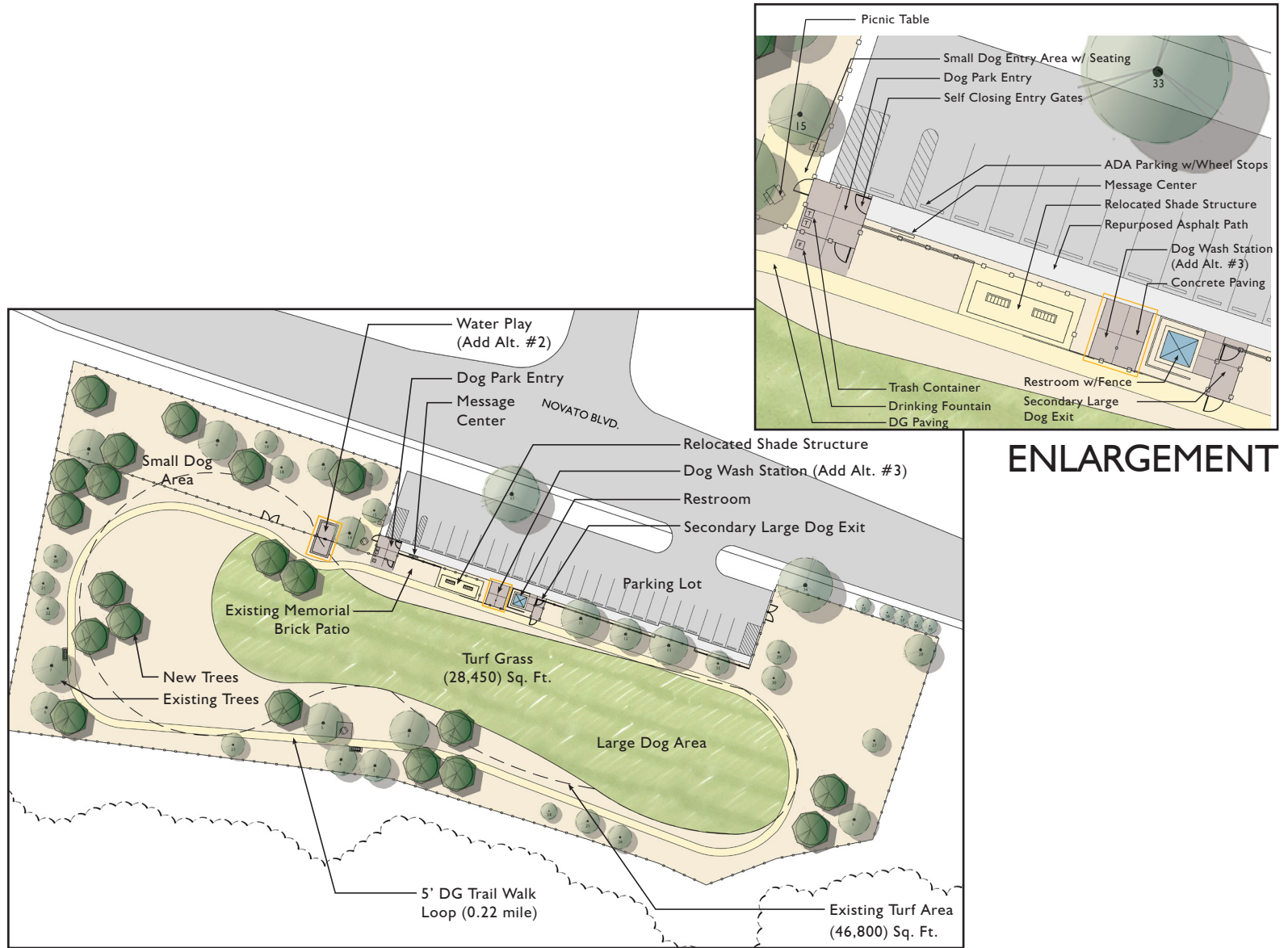
WHAT WORKS, WHAT DOESN'T?



CONCEPT DEVELOPMENT & FINDINGS

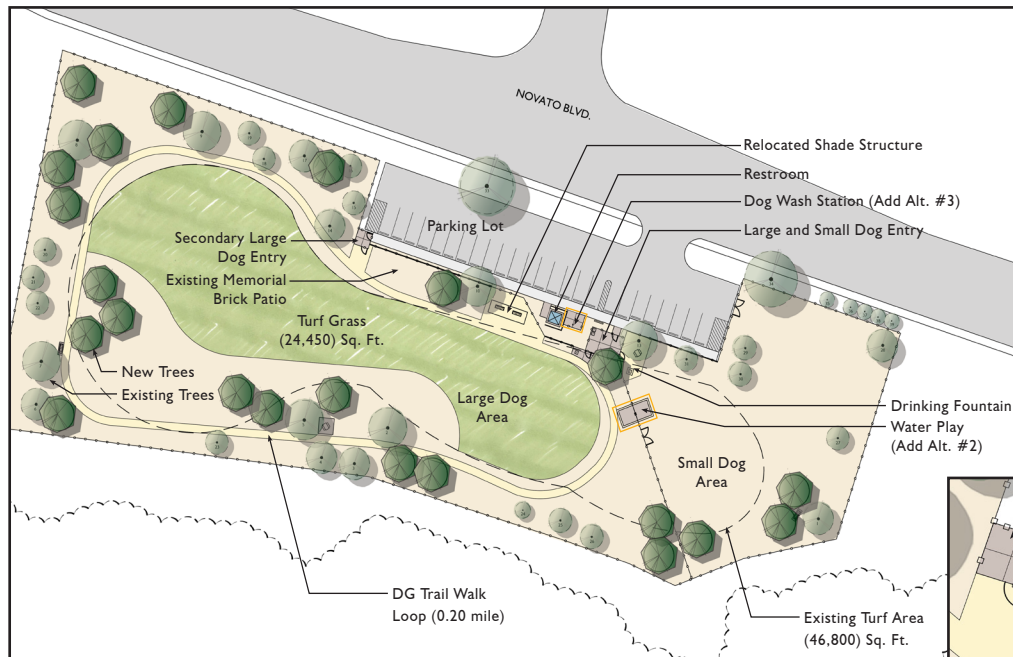


CONCEPT BASE LAYOUT 'A'

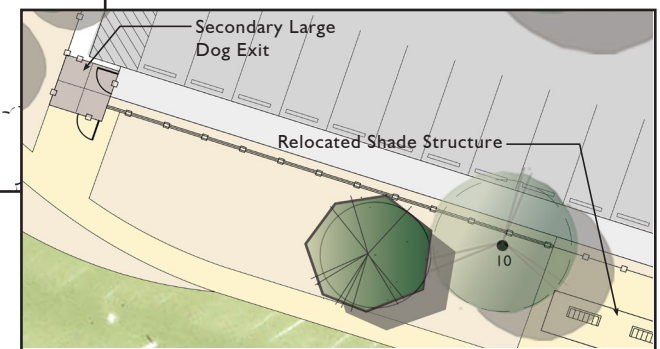
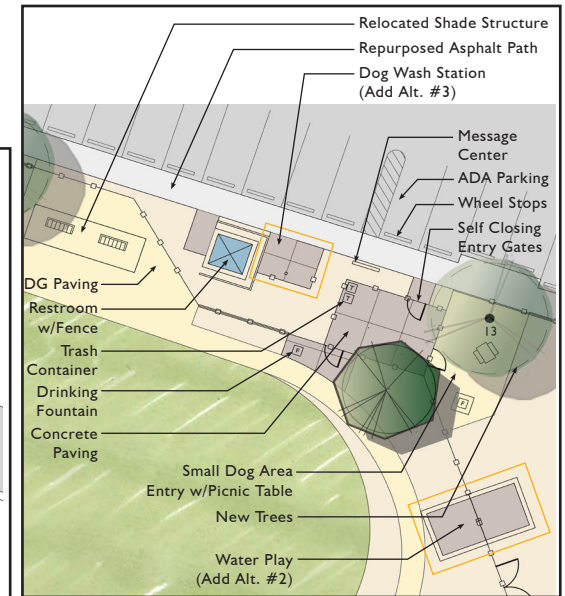


OVERVIEW CONCEPT 'A'

CONCEPT BASE LAYOUT 'B'



OVERVIEW CONCEPT 'B'



ENLARGEMENT(S)

NEXT STEPS

- Determine preferred concept plan
- Proceed into full design development
- Present to City Council for approval
- Prepare construction drawings



GATES
+ASSOCIATES



THE CITY OF
NOVATO
CALIFORNIA