



PUBLIC WORKSHOP

**SAFE ROUTES TO SCHOOL (SR2S) CYCLE 10
SAFETY IMPROVEMENT PROJECT – CIP #13-008
WEDNESDAY, APRIL 23, 2014, 7:00 PM**



SR2S - PUBLIC WORKSHOP

AGENDA

- 1. WELCOME/SIGN-IN SHEET**
- 2. STAFF INTRODUCTIONS**
- 3. PRESENTATION OF THE PROJECT**
 - PROJECT OBJECTIVES
 - PROJECT LOCATIONS
 - SCOPE OF WORK
 - SCHEDULE
- 4. QUESTIONS AND ANSWERS**
- 5. ADJOURN**



SR2S - PUBLIC WORKSHOP

AGENDA

1. WELCOME/SIGN-IN SHEET



SR2S - PUBLIC WORKSHOP

AGENDA

2. STAFF INTRODUCTIONS

Gosia Woodfin | Engineer

City of Novato | Public Works

922 Machin Avenue | Novato, CA 94945

Tel. (415) 899-8997 | Fax (415) 899-8251 | gwoodfin@novato.org



THE CITY OF
NOVATO
CALIFORNIA

SR2S - PUBLIC WORKSHOP

AGENDA

3. PRESENTATION OF THE PROJECT

- PROJECT OBJECTIVES
- PROJECT LOCATIONS
- SCOPE OF WORK
- SCHEDULE



SR2S - PUBLIC WORKSHOP

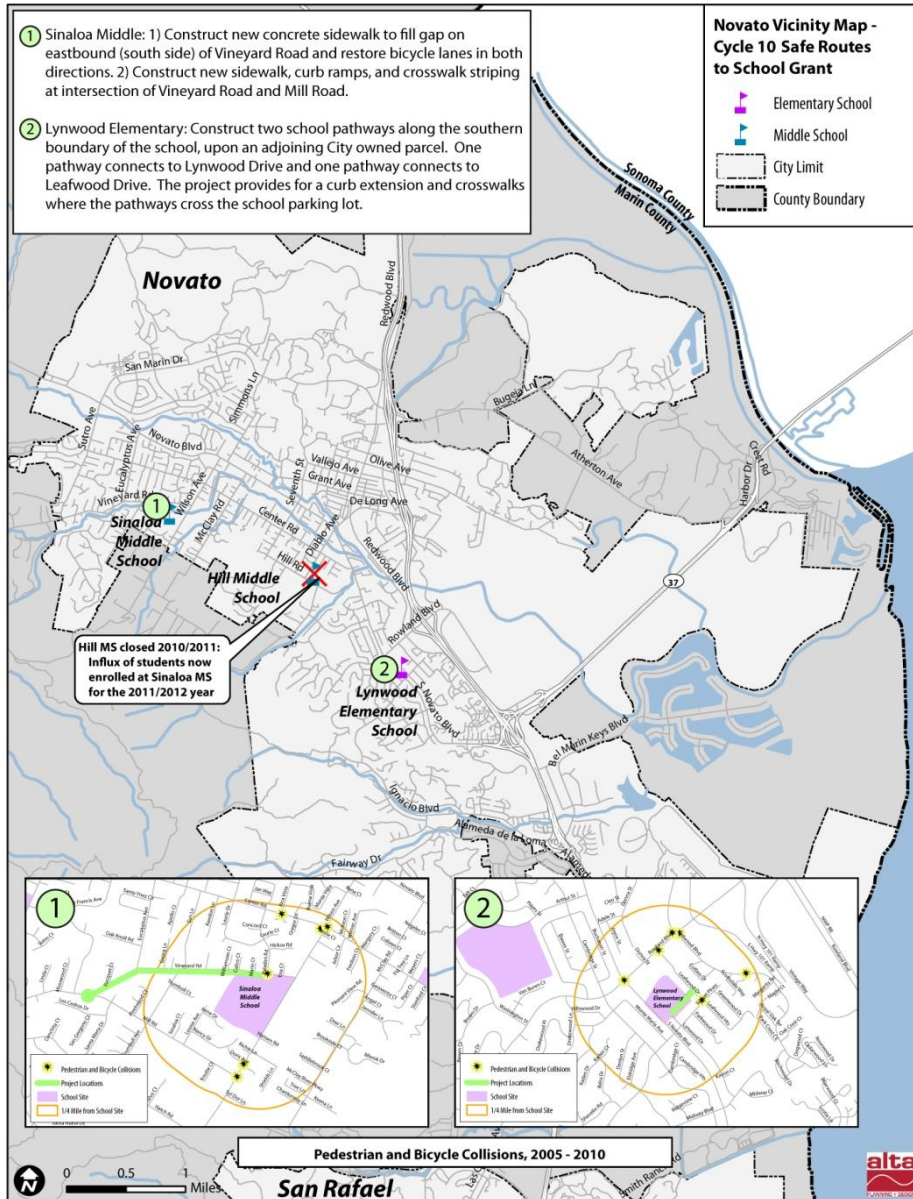
PROJECT OBJECTIVES

In 2012 the City filed an application with the California Department of Transportation for a Safe Routes to School (Cycle 10) Grant designated to improving walking and biking to schools. The application addressed improvements for Lynwood Elementary and Sinaloa Middle School. The application was approved and the City was notified of a grant award in the amount of \$441,600 for the Safe Routes to School Program (SR2S) Cycle 10.



SR2S - PUBLIC WORKSHOP

PROJECT LOCATIONS



SR2S - PUBLIC WORKSHOP

SCOPE OF WORK

LYNWOOD ELEMENTARY SCHOOL ACCESS PATHS

EXISTING CONDITIONS

Issues

1. Lynwood Elementary has no direct, continuous walking path to the main entrance from either Lynwood or Leafwood Drives.
2. Lynwood Drive sidewalk ends at school entrance, forcing students out of direction and across main vehicular entrance onto narrow sidewalk.
3. Access from the north (Leafwood Dr) is especially awkward for all modes, with a pinchpoint at the roundabout approach and a jog at the back gate separating the school lot from a city-controlled parking area. This condition may be contributing to erratic behavior of vehicles and pedestrians during the busy drop-off and pick-up periods.
4. A wide, grassy strip of land sits directly adjacent (southeast) of the parking lot, with a chain link fence separating the school parcel from a public utility right-of-way.



E
There is a striped walkway to the back school entrance from the school parking gate, but there are no pedestrian connections to it from Leafwood Drive.



F
The parking lot at Lynwood Elementary School is very congested and difficult for pedestrians to navigate.

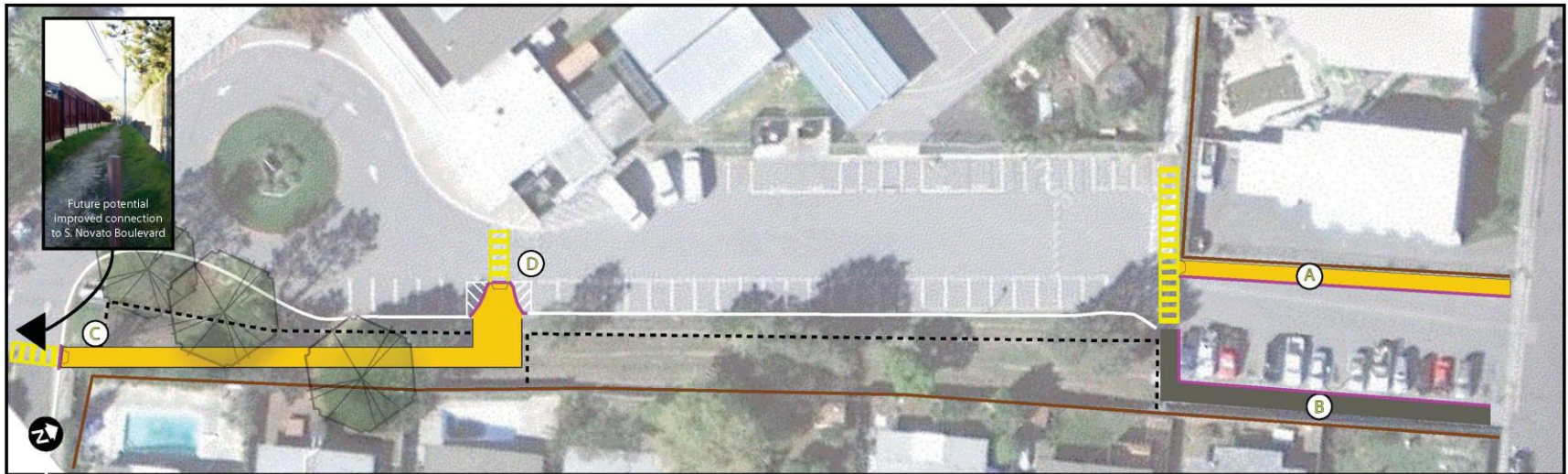


SR2S - PUBLIC WORKSHOP

SCOPE OF WORK

LYNWOOD ELEMENTARY SCHOOL ACCESS PATHS

PROPOSED CONDITIONS



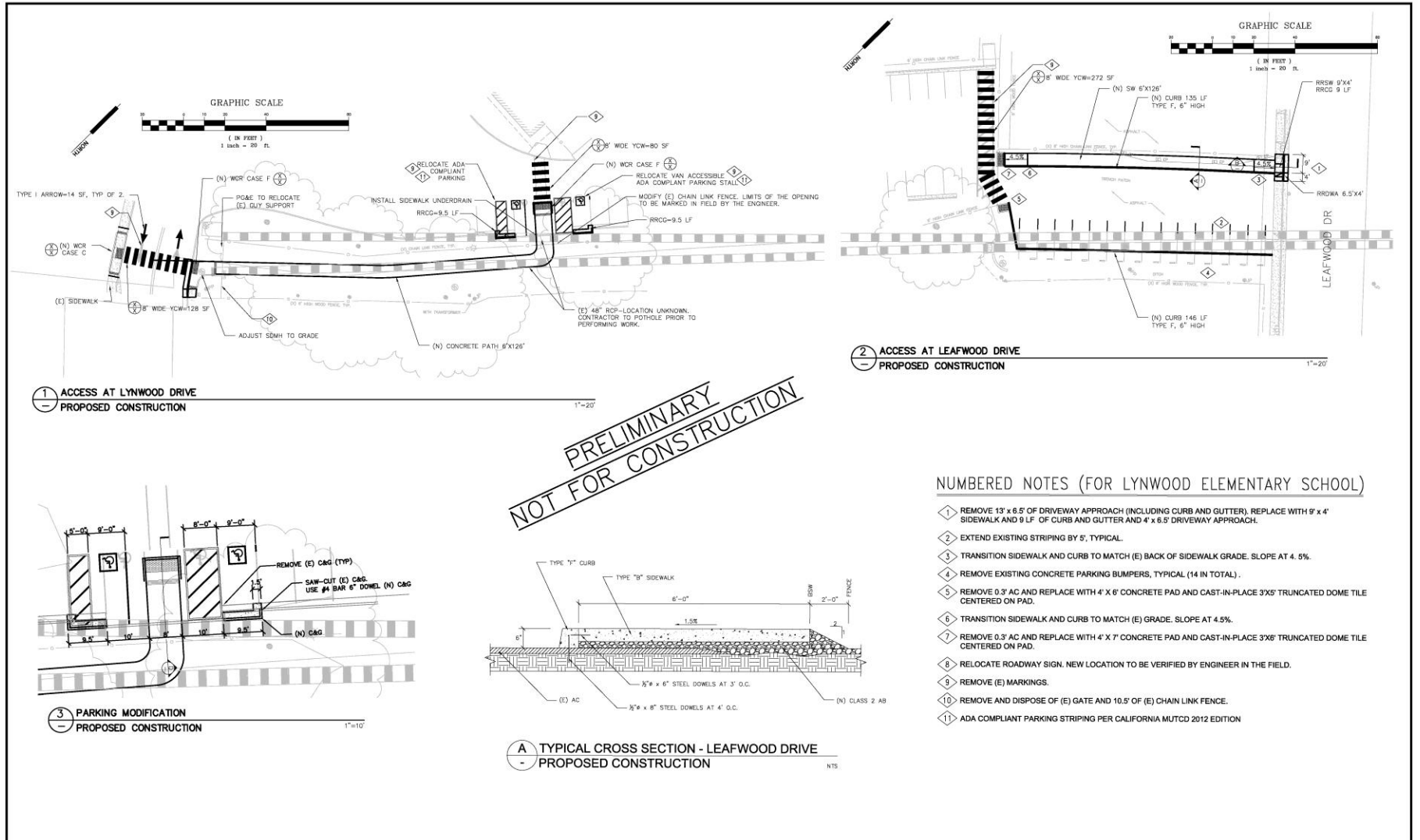
School Pathway Connections

- A** Construct a 6-foot concrete sidewalk with curb and provide high visibility crosswalk to link pathway(s) to school yard.
- B** Relocate parking away from fence; construct a new Type-F concrete barrier to develop an alternative pedestrian route through parking lot.
- C** Construct a 6-foot concrete pathway from end of existing sidewalk around drop-off/ pick-up zone to school entrance. Include receiving curb ramp for future potential pathway extension.
- D** Construct curb extension at perpendicular parking zone and high visibility crossing to school entrance. Modify parking as needed to maintain existing number of accessible parking stalls.



The new pathway from the front entrance to the existing sidewalk network on Lynnwood Drive will provide a new continuous route through the parking lot, and could one day be extended along the existing utility easement to bike lanes on S. Novato Blvd.

SR2S - PUBLIC WORKSHOP



8					Drawn By: G.W.	Submitted: .20	Date: Nov. 2013.
7					Designed By: G.W.	Principal Civil Engineer	Sheet: 4 of X
6					Checked By: J.S.	Approved By:	Project No. 13-008
5					Scale: 1"=20'	City Engineer	Date
4							
3							
2							
1							
Number	Date	Description	By	Revision Block	City of Novato Department of Public Works Engineering Division	SAFE ROUTES TO SCHOOL CYCLE 10 IMPROVEMENTS AT LYNWOOD ELEMENTARY SCHOOL	

SR2S - PUBLIC WORKSHOP

SCOPE OF WORK

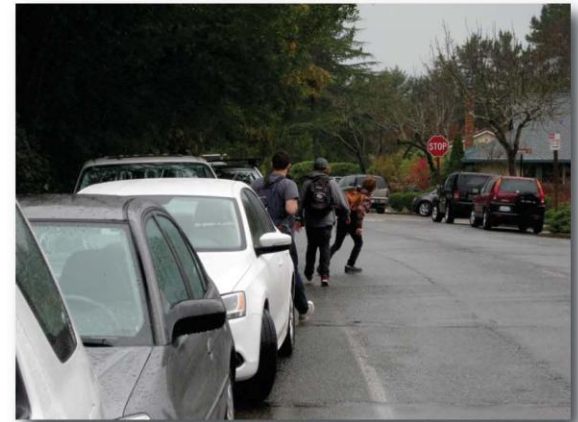
Sinaloa Middle School *Existing Conditions Photos*



Poor sidewalk and drainage conditions cause students to leap to avoid puddles and tripping hazards, limiting accessibility and demand for walking and biking to school.

These students are jaywalking to cross the street between parked cars because the sidewalk to their left has abruptly ended.

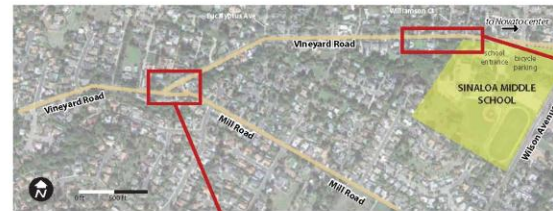
Closing the sidewalk gap on Vineyard Road will reduce these unsafe crossings, as well as instances of kids walking in the travel lanes against traffic.



SR2S - PUBLIC WORKSHOP

SCOPE OF WORK

Sinaloa Middle School Access Improvements



Existing Conditions

- Skewed "Y" intersection results in high vehicle approach speeds, poor sight distances, and longer pedestrian crossings along an important school commute route.
- Traffic island lacks sidewalks, and intersection lacks curb ramps and crosswalks where sidewalks do exist.

Proposed Conditions

- (A) Construct 4' concrete sidewalk on east side of traffic island and receiving curb ramp at existing south sidewalk
- (B) Reconstruct the east corner of Mill and Vineyard Rd with new curb ramps and reduced turning radii.
- (C) Stripe three high visibility crosswalks (two new) and remove unnecessary crosswalk at west approach to Vineyard/Mill.



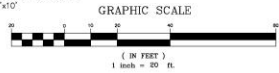
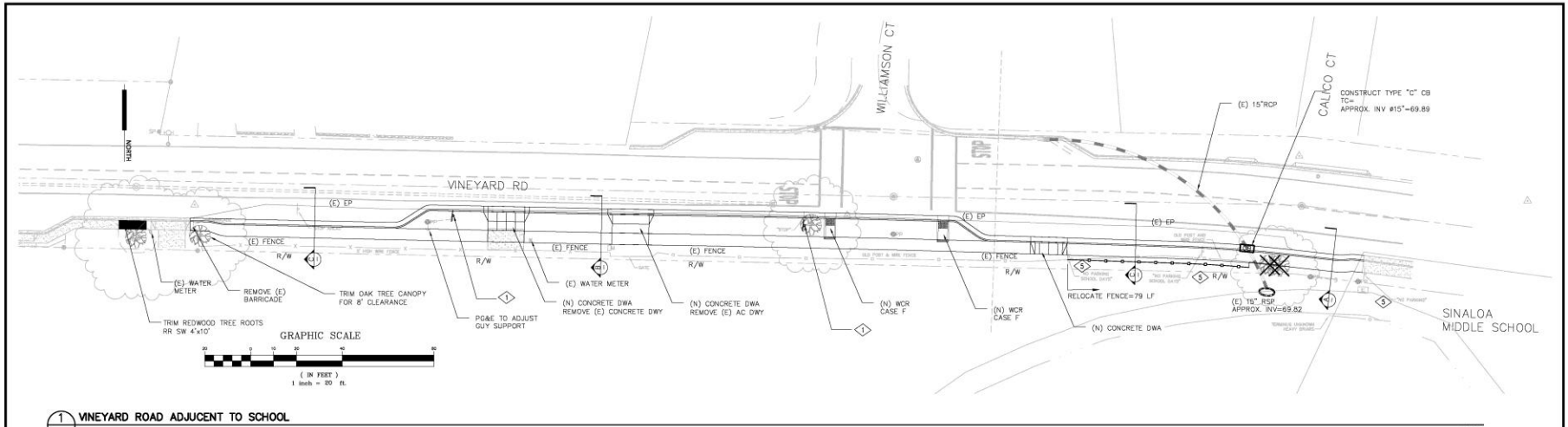
Existing Conditions

- Vineyard Road is a collector arterial that provides direct access to Sinaloa Middle School and downtown Novato from western neighborhoods.
- Vineyard Road has an approximately 750' gap in the sidewalk network immediately adjacent to the school entrance.
- The unimproved shoulder is a barrier to striping bicycle lanes along Vineyard Road, which otherwise has sufficient right-of-way width.

Proposed Conditions

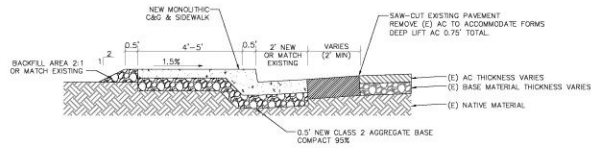
- (D) Construct approximately 750' linear feet of concrete sidewalk to fill existing gap along the south side of Vineyard Road. Reconstruct sidewalk due to tree damage.
- (E) Re-stripe Vineyard Road from Eucalyptus Avenue to Calico Court with Class II bicycle lanes.

SR2S - PUBLIC WORKSHOP

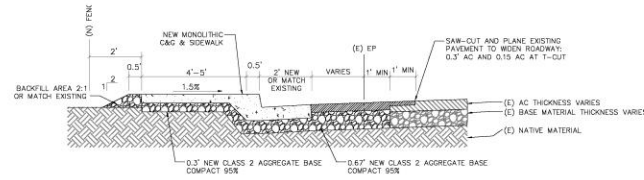


① VINEYARD ROAD ADJUNCT TO SCHOOL
PROPOSED CONSTRUCTION

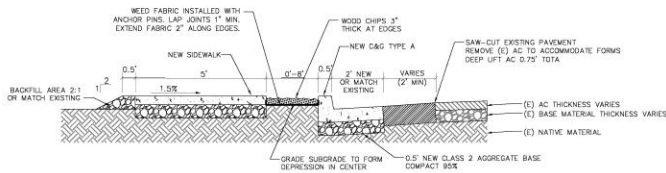
1"=20'



A TYPE A SIDEWALK, CURB AND GUTTER
TYPICAL SECTION
NTS



C ROADWAY WIDENING
TYPICAL SECTION
NTS



B TYPE B SIDEWALK AT PLANTER AREA
TYPICAL SECTION
NTS

**PRELIMINARY
NOT FOR CONSTRUCTION**

8			
7			
6			
5			
4			
3			
2			
1			
Number	Date	Description	By

Drawn By:	G.W.
Designed By:	G.W.
Checked By:	J.S.
Scale:	1"=20'



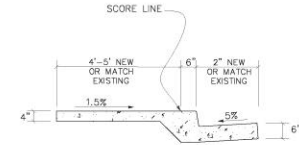
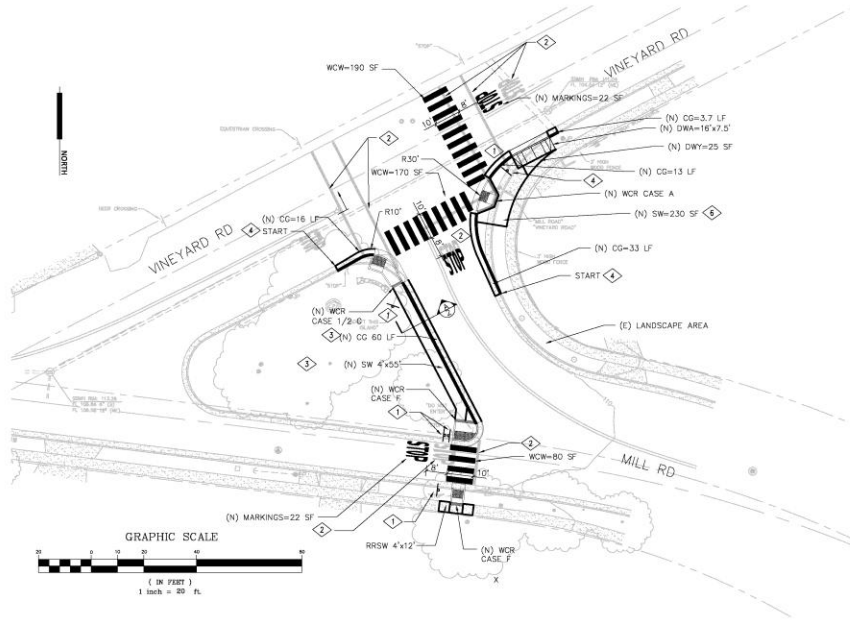
City of Novato
Department of Public Works
Engineering Division

Submitted:	..20
Principal Civil Engineer:	
Approved By:	
Civil Engineer:	Date

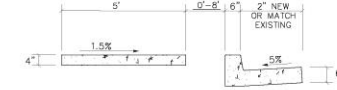
SAFE ROUTES TO SCHOOL CYCLE 10
IMPROVEMENTS AT SINALOA MIDDLE SCHOOL
VINEYARD ROAD ADJUNCT TO SCHOOL

Date:	Nov. 2013.
Sheet:	2 of X
Project No.:	13-008

SR2S - PUBLIC WORKSHOP



(X) TYPE "A" CONCRETE CURB, GUTTER AND SIDEWALK MONOLITHIC NTS



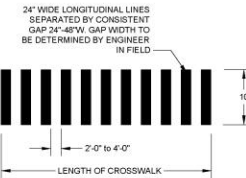
(X) TYPE "B" CONCRETE SIDEWALK AND TYPE "A" CURB AND GUTTER NTS

(1) VINEYARD ROAD AT MILL ROAD PROPOSED CONSTRUCTION 1"=20'

NUMBERED NOTES (FOR SINALOA MIDDLE SCHOOL)

- 1 > RELOCATE ROADWAY SIGN. NOT A PAY ITEM, NEW LOCATION TO BE VERIFIED BY ENGINEER IN THE FIELD.
- 2 > REMOVE (E) MARKINGS.
- 3 > ALL (N) CONCRETE SIDEWALK AND CURB AND GUTTER SHALL BE PLACED MONOLITHICALLY.
- 4 > REMOVE (E) CG.
- 5 > REMOVE ROADWAY SIGN. NOT A PAY ITEM.
- 6 > REMOVE (E) GRAVEL MULCH AND RELOCATE IN ADJACENT (N) LANDSCAPE AREA.

PRELIMINARY
NOT FOR CONSTRUCTION



(X) CROSSWALK NTS

8				
7				
6				
5				
4				
3				
2				
1				
Number	Date	Description	By	Revision Block

Drawn By:	G.W.
Designed By:	G.W.
Checked By:	J.S.
Scale:	1"=20'



City of Novato
Department of Public Works
Engineering Division

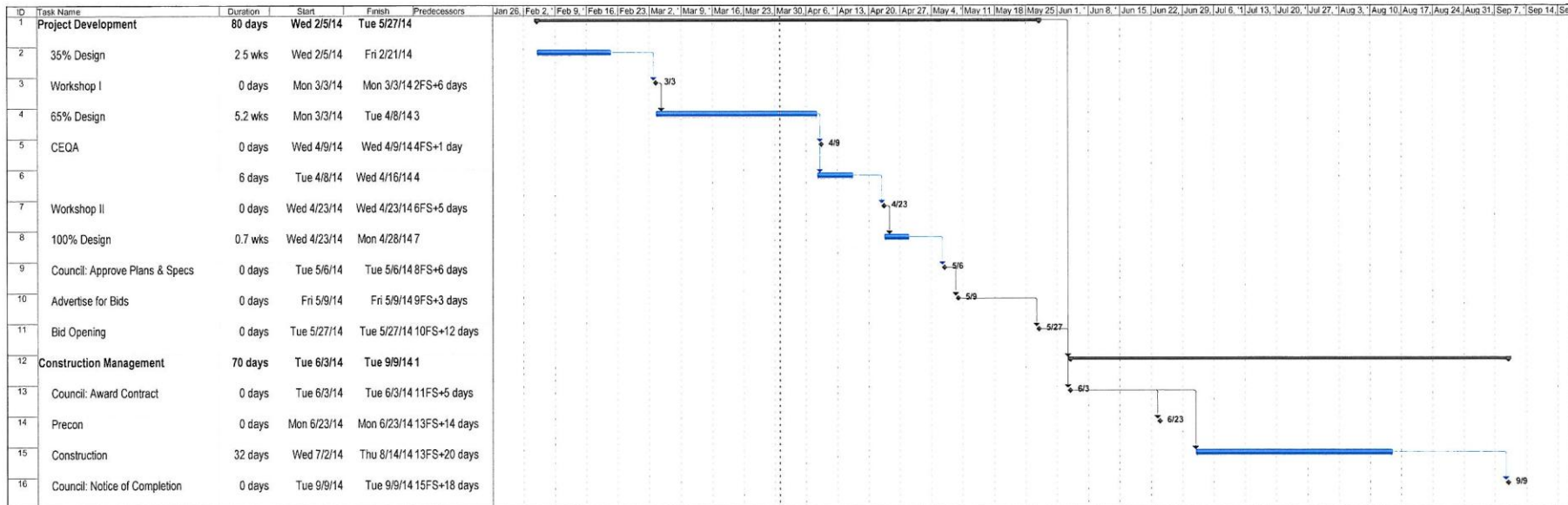
Submitted:	,20
Principal Civil Engineer	
Approved By:	
City Engineer	Date

SAFE ROUTES TO SCHOOL CYCLE 10
IMPROVEMENTS AT SINALOA MIDDLE SCHOOL
VINEYARD ROAD AT MILL ROAD

Date	Nov. 2013
Sheet	3 of X
Project No.	13-008

SR2S - PUBLIC WORKSHOP

SCHEDULE



SR2S - PUBLIC WORKSHOP

AGENDA

4. QUESTIONS AND ANSWERS



SR2S - PUBLIC WORKSHOP

AGENDA

5. ADJOURN



SR2S - PUBLIC WORKSHOP

THANK YOU FOR COMING

